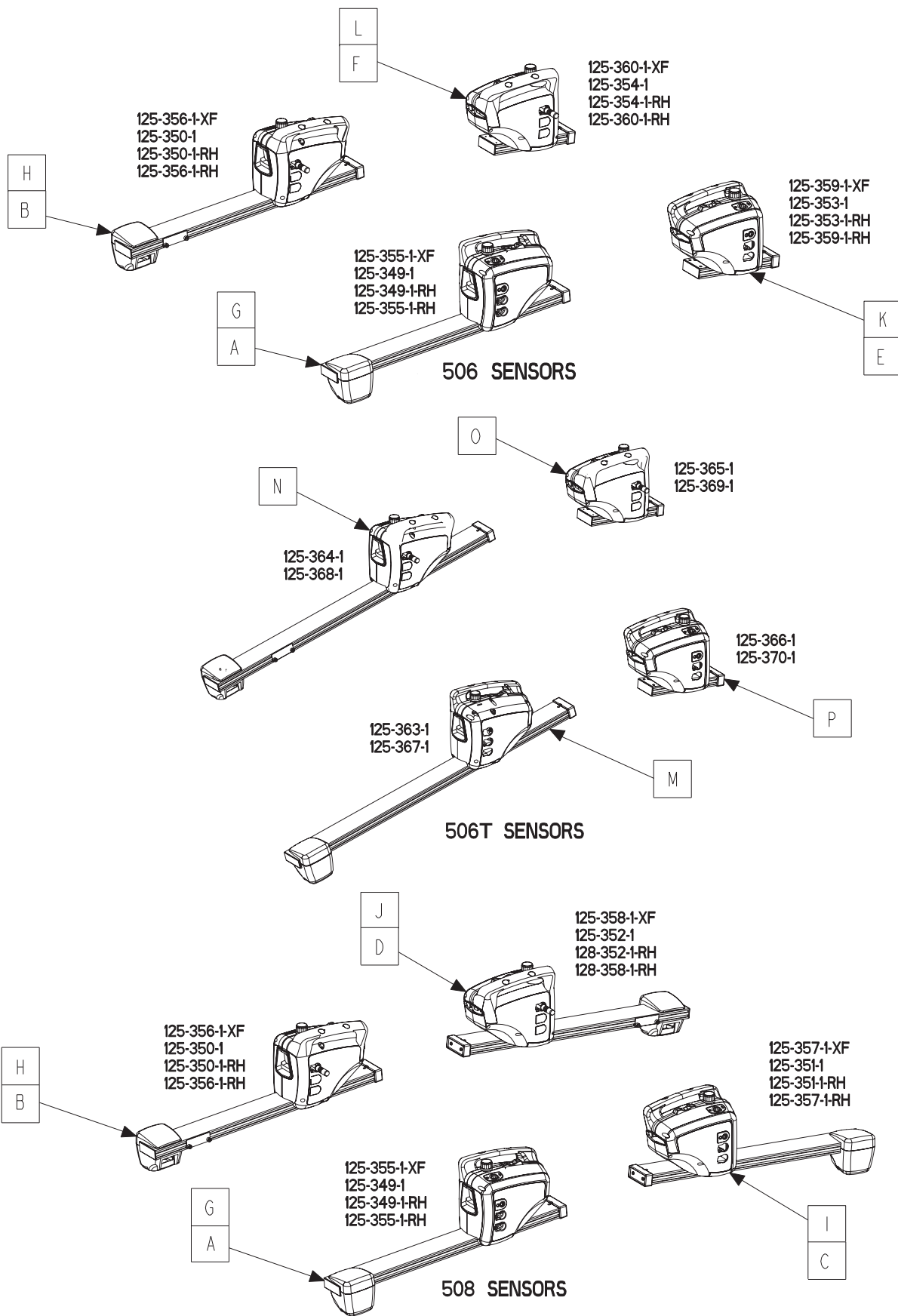


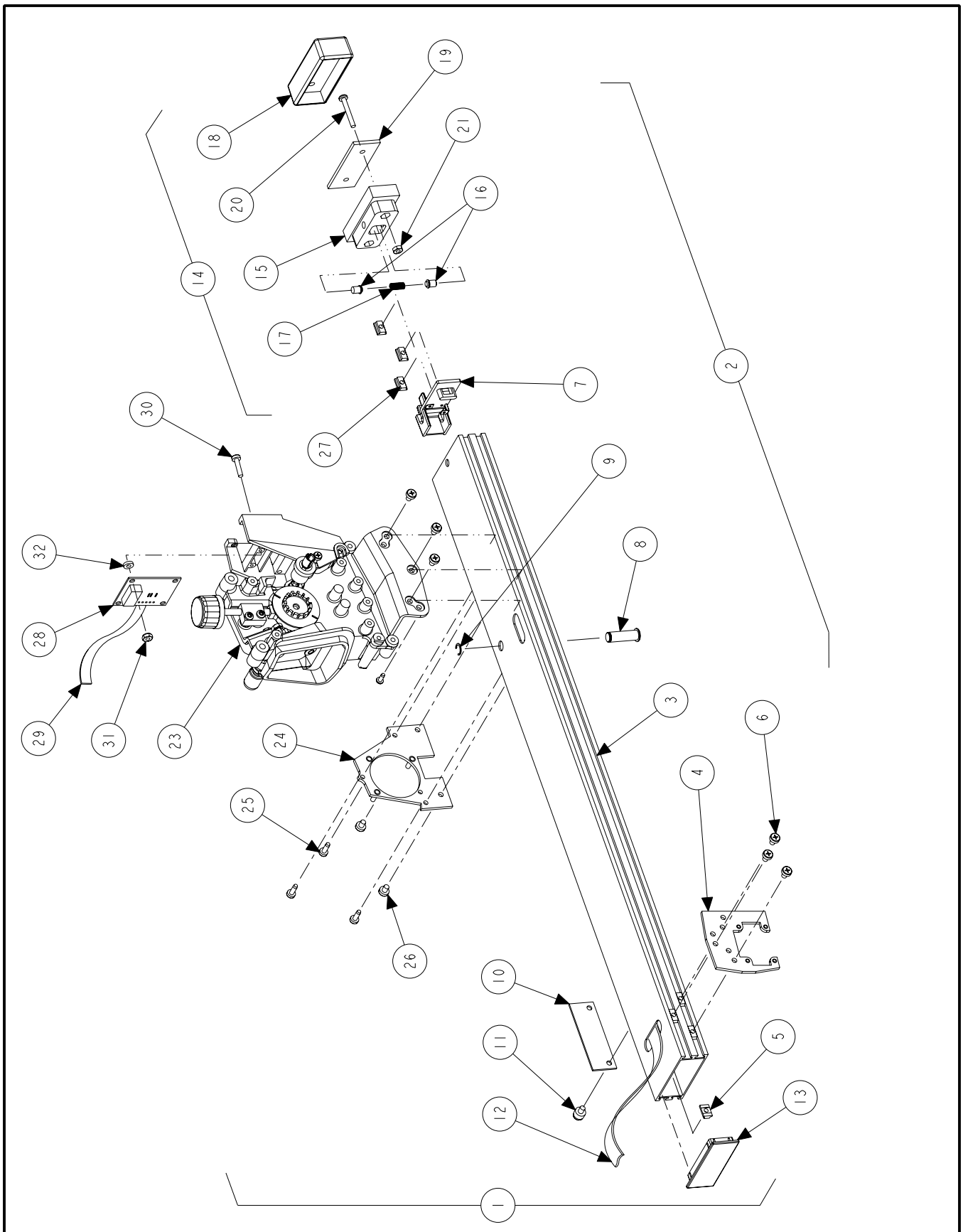
## DSP506/506T/508 SENSOR ASSEMBLY



## DSP506/506T/508 SENSOR ASSEMBLY

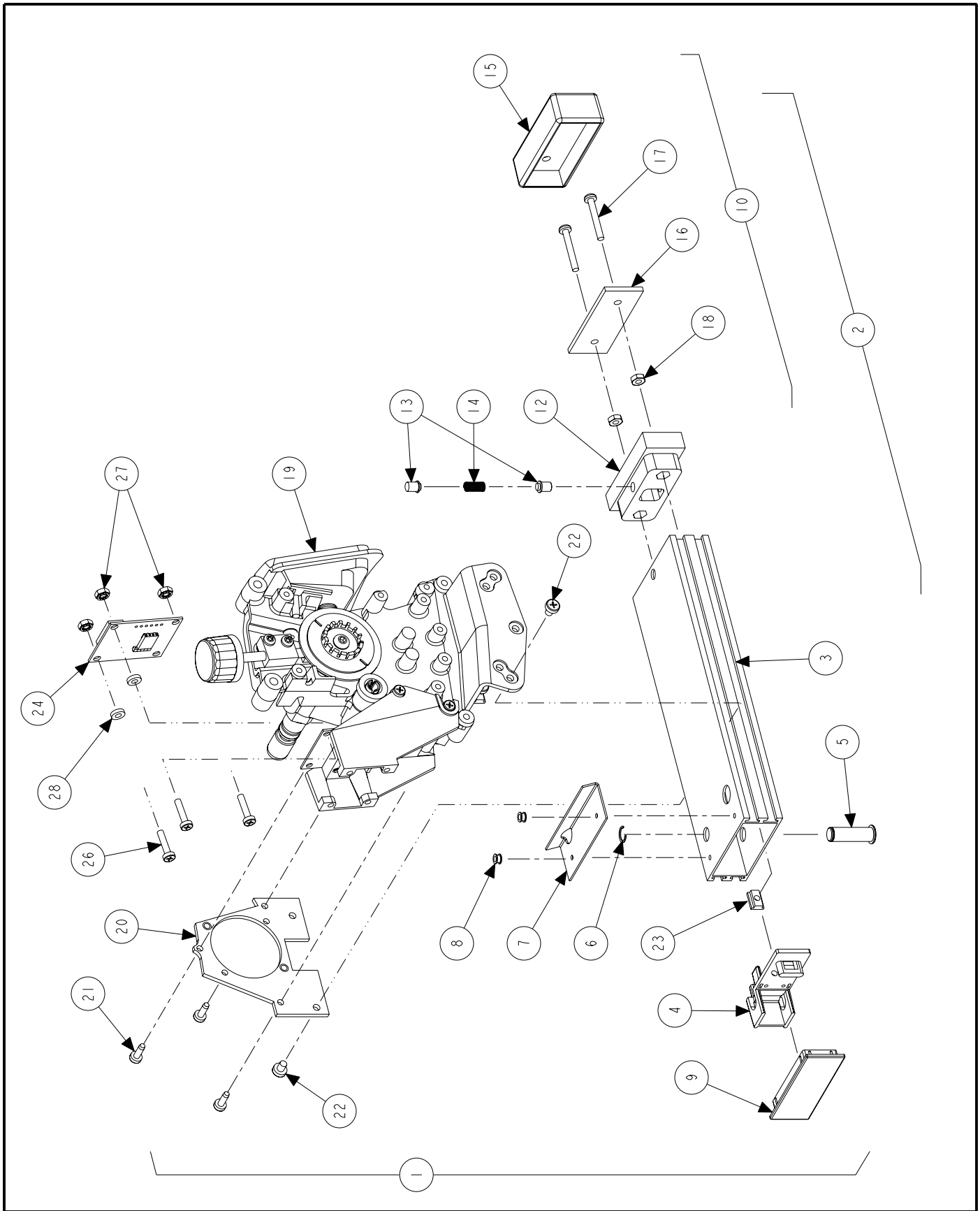
REFER TO NEXT SHEET FOR PARTS DESCRIPTION LISTING

| Index No. | Part Number  | Description   |
|-----------|--------------|---|
| A         | 125-349-1    | SENSOR ASSEMBLY, DSP506/508 LEFT FRONT (See Sheet 3,5,10)                       |
|           | 125-349-1-RH | SENSOR ASSEMBLY, DSP506/508 LEFT FRONT RIDE HEIGHT (See Sheet 3,5,10,12)        |
| B         | 125-350-1    | SENSOR ASSEMBLY, DSP506/508 RIGHT FRONT (See Sheet 3,5,10)                      |
|           | 125-350-1-RH | SENSOR ASSEMBLY, DSP506/508 RIGHT FRONT RIDE HEIGHT (See Sheet 3,5,10,12)       |
| C         | 125-351-1    | SENSOR ASSEMBLY, DSP508 LEFT REAR (See Sheet 3,5,10)                            |
|           | 125-351-1-RH | SENSOR ASSEMBLY, DSP508 LEFT REAR RIDE HEIGHT (See Sheet 3,5,10,12)             |
| D         | 125-352-1    | SENSOR ASSEMBLY, DSP508 RIGHT REAR (See Sheet 3,5,10)                           |
|           | 125-352-1-RH | SENSOR ASSEMBLY, DSP508 RIGHT REAR RIDE HEIGHT (See Sheet 3,5,10,12)            |
| E         | 125-353-1    | SENSOR ASSEMBLY, DSP506 LEFT REAR (See Sheet 4,7,10)                            |
|           | 125-353-1-RH | SENSOR ASSEMBLY, DSP506 LEFT REAR RIDE HEIGHT (See Sheet 4,7,9,11)              |
| F         | 125-354-1    | SENSOR ASSEMBLY, DSP506 RIGHT REAR (See Sheet 4,7,10)                           |
|           | 125-354-1-RH | SENSOR ASSEMBLY, DSP508 RIGHT REAR RIDE HEIGHT (See Sheet 4,7,10,12)            |
| G         | 125-355-1    | SENSOR ASSEMBLY, DSP506/508 XF LEFT FRONT (See Sheet 3,6,10,11)                 |
|           | 125-355-1-RH | SENSOR ASSEMBLY, DSP506/508 XF LEFT REAR RIDE HEIGHT (See Sheet 3,6,10,11,12)   |
| H         | 125-356-1    | SENSOR ASSEMBLY, DSP506/508 XF RIGHT FRONT (See Sheet 3,6,10,11)                |
|           | 125-356-1-RH | SENSOR ASSEMBLY, DSP506/508 XF RIGHT FRONT RIDE HEIGHT (See Sheet 3,5,6,10)     |
| I         | 125-357-1    | SENSOR ASSEMBLY, DSP508 XF LEFT REAR (See Sheet 3,5,6,10)                       |
|           | 125-357-1-RH | SENSOR ASSEMBLY, DSP506/508 XF RIGHT REAR RIDE HEIGHT (See Sheet 3,6,10,11,12)  |
| J         | 125-358-1    | SENSOR ASSEMBLY, DSP508 XF RIGHT REAR (See Sheet 3,6,10,11)                     |
|           | 125-358-1-RH | SENSOR ASSEMBLY, DSP508 XF RIGHT REAR RIDE HEIGHT (See Sheet 3,6,10,11,12)      |
| K         | 125-359-1    | SENSOR ASSEMBLY, DSP506 XF LEFT REAR (See Sheet 4,8,10,11)                      |
|           | 125-359-1-RH | SENSOR ASSEMBLY, DSP506 XF LEFT REAR RIDE HEIGHT (See Sheet 4,8,10,11,12)       |
| L         | 125-360-1    | SENSOR ASSEMBLY, DSP506 XF RIGHT REAR (See Sheet 4,8,10,11)                     |
|           | 125-360-1-RH | SENSOR ASSEMBLY, DSP506 XF RIGHT REAR RIDE HEIGHT (See Sheet 4,8,10,11,12)      |
| M         | 125-363-1    | SENSOR ASSEMBLY, DSP506T LEFT FRONT (See Sheet 3,6)                             |
|           | 125-367-1    | SENSOR ASSEMBLY, DSP506T XF LEFT FRONT (See Sheet 3,6,10,11)                    |
| N         | 125-364-1    | SENSOR ASSEMBLY, DSP506T RIGHT FRONT (See Sheet 3,6)                            |
|           | 125-368-1    | SENSOR ASSEMBLY, DSP506T XF RIGHT FRONT (See Sheet 3,6,10,11)                   |
| O         | 125-365-1    | SENSOR ASSEMBLY, DSP506T LEFT REAR (See Sheet 4,7,8)                            |
|           | 125-369-1    | SENSOR ASSEMBLY, DSP506T XF LEFT REAR (See Sheet 4,7,8,10,11)                   |
| P         | 125-366-1    | SENSOR ASSEMBLY, DSP506T RIGHT REAR (See Sheet 4,7,8)                           |
|           | 125-370-1    | SENSOR ASSEMBLY, DSP506T XF RIGHT REAR (See Sheet 4,7,8,10,11)                  |
| Q         | 38-784-3     | CABLE ASSEMBLY, SHIELDED SENSOR (Not Illustrated)                               |
| R         | 38-512-1     | CABLE ASSEMBLY, 10 EXTENSION (Not Illustrated)                                  |
| S         | 117-178-1    | SENSOR HANGER, DSP500 RIGHT FRONT/LEFT REAR (Not Illustrated)                   |
| T         | 117-179-1    | SENSOR HANGER, DSP500 LEFT FRONT/RIGHT REAR (Not Illustrated)                   |
| U         | 117-180-1    | SENSOR HANGER, DSP500 RIGHT FRONT/LEFT REAR W/ CHARGING (Not Illustrated)       |
| V         | 117-181-1    | SENSOR HANGER, DSP500 LEFT FRONT/RIGHT REAR W/ CHARGING (Not Illustrated)       |
| W         | 232-157-1    | ELECTRONIC ASSEMBLY, 2.4 GHZ (XF SENSORS ONLY) (Not Illustrated) (See Sheet 11) |
| X         | 221-527-1    | KIT, TRUCK MEASURING TOOL (Not Illustrated)                                     |
| Y         | 221-669-1    | KIT, TOOL RIDE HEIGHT, DSP500 (Not Illustrated) (See Sheet 12)                  |
| Z         | 20-1765-1    | KIT, SENSOR HANGER DSP500 (Not Illustrated)                                     |
| Z1        | 20-1954-1    | KIT, SENSOR HANGER ADAPTORS DSP506T (Not Illustrated)                           |



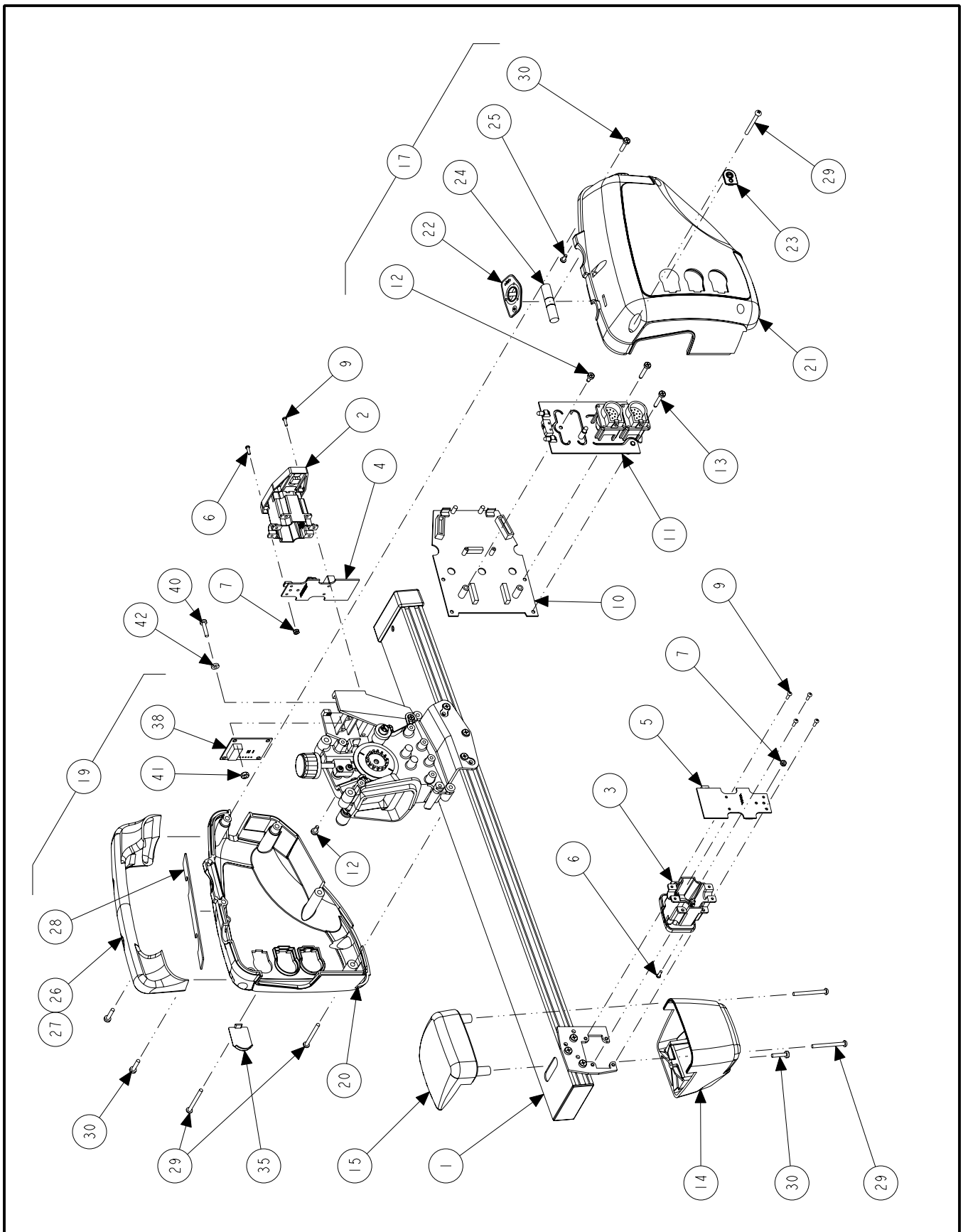
**DSP506/DSP506T/508 SENSOR ASSEMBLY**  
 REFER TO NEXT SHEET FOR PARTS DESCRIPTION LISTING

| Index No. | Part Number | Description   | 506 XF | 506 | 506T | 506T XF |
|-----------|-------------|---|--------|-----|------|---------|
| 1         | 117-197-1   | HANGER ASSEMBLY - DSP500/506T LEFT FRONT (Consisting Of:)           | 1      | 1   | 1    |         |
| 1         | 117-198-1   | HANGER ASSEMBLY - DSP500/506T RIGHT FRONT (Consisting Of:)          | 1      | 1   | 1    |         |
| 1         | 117-199-1   | HANGER ASSEMBLY - DSP500/506T LEFT FRONT (Consisting Of:)           |        |     |      | 1       |
| 1         | 117-200-1   | HANGER ASSEMBLY - DSP500/506T RIGHT FRONT (Consisting Of:)          |        |     |      | 1       |
| 2         | 16-749-1    | TUBE ASSEMBLY, TOE ARM LEFT FRONT/RIGHT REAR (Consisting Of:)       | 1      |     |      |         |
| OR        | 16-750-1    | TUBE ASSEMBLY, TOE ARM RIGHT FRONT/LEFT REAR (Consisting Of:)       | 1      |     |      |         |
| OR        | 16-757-1    | TUBE ASSEMBLY, TOE ARM LEFT FRONT/RIGHT REAR (Consisting Of:)       |        | 1   |      |         |
| OR        | 16-758-1    | TUBE ASSEMBLY, TOE ARM RIGHT FRONT/LEFT REAR (Consisting Of:)       |        | 1   |      |         |
| OR        | 16-775-1    | TUBE ASSEMBLY, TOE ARM DSP500T/506T LEFT FRONT (Consisting Of:)     |        |     | 1    |         |
| OR        | 16-776-1    | TUBE ASSEMBLY, TOE ARM DSP500T/506T RIGHT FRONT (Consisting Of:)    |        |     | 1    |         |
| OR        | 16-777-1    | TUBE ASSEMBLY, TOE ARM DSP500T/506T XF LEFT FRONT (Consisting Of:)  |        |     |      | 1       |
| OR        | 16-778-1    | TUBE ASSEMBLY, TOE ARM DSP500T/506T XF RIGHT FRONT (Consisting Of:) |        |     |      | 1       |
| 3         | 16-748-011  | TUBE, TOE ARM PAINTED   | 1      | 1   |      |         |
| OR        | 16-771-011  | TUBE, TOEARM DSP506T  |        |     | 1    | 1       |
| 4         | 51-1984-1   | PLATE ASSEMBLY, TRANS TOE   | 1      | 1   |      |         |
| OR        | 51-2053-1   | PLATE ASSEMBLY, TRANS TOE DSP506T                                   |        |     | 1    | 1       |
| 5         | 76-382-2    | NUT -T  | 5      | 5   | 5    | 5       |
| 6         | 75-608-2    | PHMS 10-32 x .31 PR ZP  | 3      | 3   | 3    | 3       |
| 7         | 105-417-1   | HOUSING ASSEMBLY, BATTERY CONTACT                                   | 1      |     |      | 1       |
| 8         | 135-363-2   | PIN, BATTERY  | 1      |     |      | 1       |
| 9         | 112-75-2    | SNAP RING - 5103-37   | 1      |     |      | 1       |
| 10        | 51-1980-011 | PLATE, COUNTERWEIGHT, ADJUST  | 1      | 1   | 1    | 1       |
| 11        | 75-613-2    | SCREW, THUMB 10-32 x 1/4 NYLON                                      | 2      | 2   | 2    | 2       |
| 12        | 38-798-1    | CABLE, DSP300 TRANS. TOE, 36"                                       | 1      | 1   |      |         |
| OR        | 38-988-1    | CABLE, DSP506T TRANS. TOE, 42"                                      |        |     | 1    | 1       |
| 13        | 53-141-2    | CAP, TOE ARM  | 1      | 1   | 1    | 1       |
| 14        | 65-78-1     | WEIGHT ASSEMBLY, COUNTER (Consisting Of:)                           | 1      |     |      | 1       |
| OR        | 65-83-1     | WEIGHT ASSEMBLY, COUNTER NON-XF (Not Illustrated) (Consisting Of:)  |        | 1   | 1    |         |
| 15        | 53-139-2    | CAP, BATTERY COVER  | 1      | 1   | 1    | 1       |
| 16        | 43-137-2    | PLUG, BUTTON PLUNGER  | 2      | 2   | 2    | 2       |
| 17        | 98-395-2    | SPRING, COMPRESSION WEIGHT  | 1      | 1   | 1    | 1       |
| 18        | 53-142-2    | CAP, BATTERY BUMPER   | 1      | 1   | 1    | 1       |
| 19        | 51-1979-002 | PLATE, COUNTERWEIGHT  | 1      | 1   | 1    | 1       |
| 20        | 75-605-2    | SCREW, STAP #8-32 TRILOB TX BZ                                      | 2      |     |      | 2       |
| OR        | 75-295-2    | RHMS 8-32 x 1-3/4 (Not Illustrated)                                 |        | 2   | 2    |         |
| 21        | 76-23-2     | NUT, HEX 8-32 ZP  | 2      |     |      | 2       |
| 22        | 65-80-2     | WEIGHT, BATTERY REPLACEMENT (Not Illustrated)                       |        | 1   | 1    |         |
| 23        | 11-1055-1   | SUPPORT ASSEMBLY, DSP500XF LEFT FRONT/RIGHT REAR (See Sheet 7)      | 1      |     |      | 1       |
| OR        | 11-1056-1   | SUPPORT ASSEMBLY, DSP500XF RIGHT FRONT/LEFT REAR (See Sheet 7)      | 1      |     |      | 1       |
| OR        | 11-1080-1   | SUPPORT ASSEMBLY, DSP500 RIGHT FRONT/LEFT REAR (See Sheet 7)        |        | 1   | 1    |         |
| OR        | 11-1081-1   | SUPPORT ASSEMBLY, DSP500 LEFT FRONT/RIGHT REAR (See Sheet 7)        |        | 1   | 1    |         |
| 24        | 51-1974-1   | PLATE ASSEMBLY, RIGHT FRONT/LEFT REAR                               | 1      | 1   |      |         |
| OR        | 51-1975-1   | PLATE ASSEMBLY, LEFT FRONT/RIGHT REAR                               | 1      | 1   |      |         |
| OR        | 51-2069-1   | PLATE ASSEMBLY, REAR RF DSP506T                                     |        |     | 1    | 1       |
| OR        | 51-2070-1   | PLATE ASSEMBLY, REAR RF DSP506T                                     |        |     | 1    | 1       |
| 25        | 75-441-2    | SCREW STAP 8-32 x .50 PH PR BZ                                      | 3      | 3   | 3    | 3       |
| 26        | 75-608-2    | PHMS 10 - 32 x .31 PR ZP  | 5      | 5   | 5    | 5       |
| 27        | 76-382-2    | NUT -T  | 5      | 5   | 5    | 5       |
| 28        | 109-70-2P   | TRANSDUCER, DIGITAL CAM/CAS   | 1      | 1   | 1    | 1       |
| 29        | 37-530-1    | WIRE DSP500 CAMBER, 10"   | 1      | 1   | 1    | 1       |
| 30        | 75-414-2    | PHMS 8-32 x 3/4 PR BZ   | 3      | 3   | 3    | 3       |
| 31        | 76-71-2     | NUT, KEPS 8-32 ZP   | 3      | 3   | 3    | 3       |
| 32        | 77-309-2    | WASHER, NYLON #8  | 2      | 2   | 2    | 2       |



**DSP506/506T/508 SENSOR ASSEMBLY**  
 REFER TO NEXT SHEET FOR PARTS DESCRIPTION LISTING

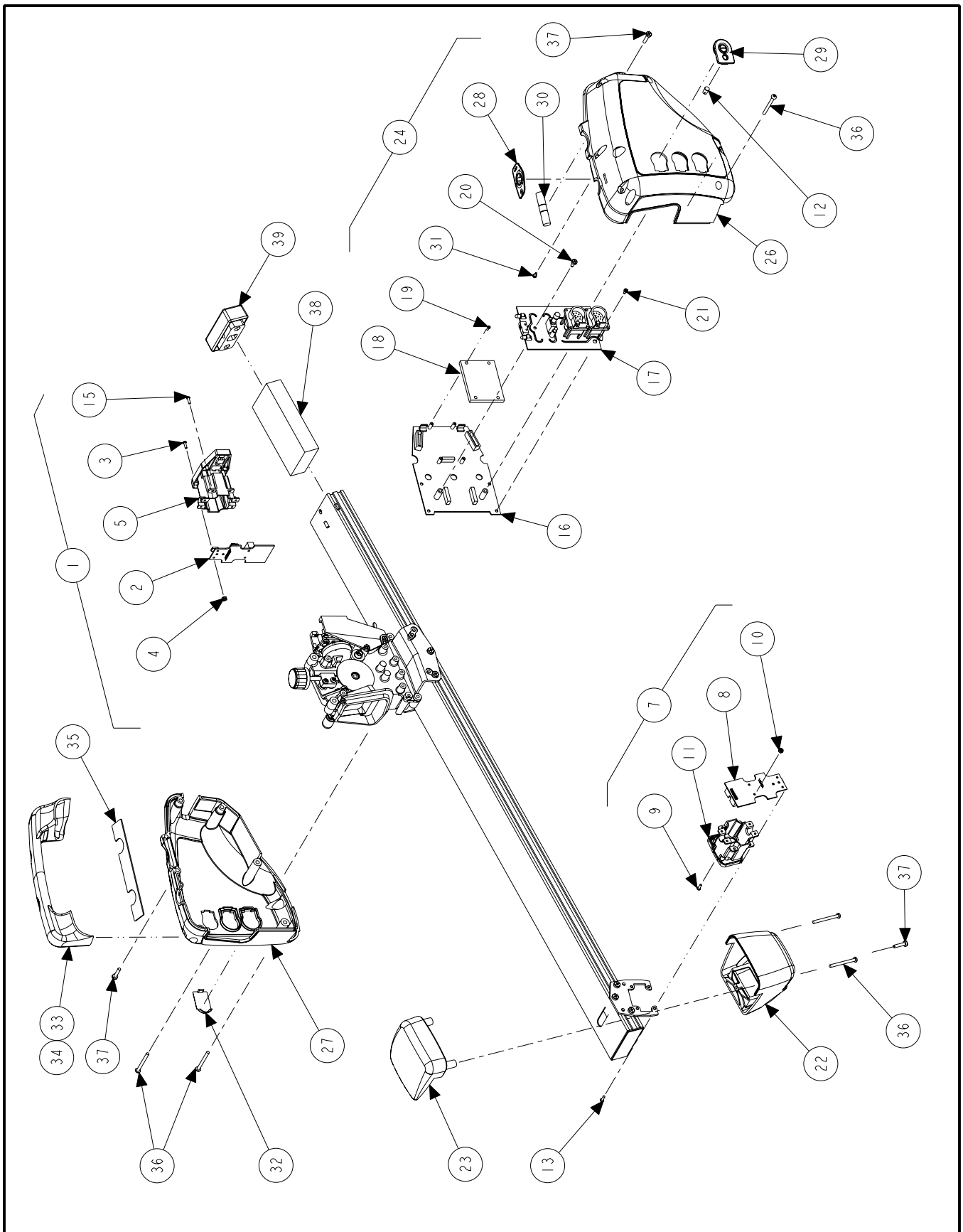
| Index No. | Part Number | Description  | LEFT REAR 506 | RIGHT REAR 506 | LEFT REAR 506-XF 506T-XF | RIGHT REAR 506-XF 506T-XF | LEFT REAR 506T | RIGHT REAR 506T |
|-----------|-------------|--|---------------|----------------|--------------------------|---------------------------|----------------|-----------------|
| 1         | 117-189-1   | HANGER ASSEMBLY - DSP506 XF LEFT REAR (Consisting Of:)                   |               |                | 1                        |                           |                |                 |
| OR        | 117-190-1   | HANGER ASSEMBLY - DSP506 XF RIGHT REAR (Consisting Of:)                  |               |                |                          | 1                         |                |                 |
| OR        | 117-191-1   | HANGER ASSEMBLY - DSP506 LEFT REAR (Consisting Of:)                      | 1             |                |                          |                           | 1              |                 |
| OR        | 117-192-1   | HANGER ASSEMBLY - DSP506 RIGHT REAR (Consisting Of:)                     |               | 1              |                          |                           |                | 1               |
| 2         | 16-760-1    | TUBE ASSEMBLY - DSP506 XF LEFT REAR (Consisting Of:)                     |               |                | 1                        | 1                         |                |                 |
| OR        | 16-761-1    | TUBE ASSEMBLY - DSP506 XF RIGHT REAR (Consisting Of:)                    | 1             | 1              |                          |                           | 1              | 1               |
| 3         | 16-759-011  | TUBE - TOE ARM DSP506 PAINTED  | 1             | 1              | 1                        | 1                         | 1              | 1               |
| 4         | 105-417-1   | HOUSING ASSEMBLY - BATTERY CONTACT                                       |               |                | 1                        | 1                         |                |                 |
| 5         | 135-363-2   | PIN - BATTERY DSP500   |               |                | 1                        | 1                         |                |                 |
| 6         | 112-75-2    | SNAP RING - 5103-37  |               |                | 1                        | 1                         |                |                 |
| 7         | 14-1032-011 | BRACKET WIRE - SHIELD PAINTED  | 1             | 1              | 1                        | 1                         | 1              | 1               |
| 8         | 48-28-2     | RIVET, BLIND 1/8 x 1/4   | 2             | 2              | 2                        | 2                         | 2              | 2               |
| 9         | 53-141-2    | CAP - TOE ARM  | 1             | 1              | 1                        | 1                         | 1              | 1               |
| 10        | 65-78-1     | WEIGHT ASSEMBLY - COUNTER (Consisting Of:)                               |               |                | 1                        | 1                         |                |                 |
| 11        | 65-83-1     | WEIGHT ASSEMBLY - COUNTER (Not Illustrated) (Consisting Of:)             | 1             | 1              |                          |                           | 1              | 1               |
| 12        | 53-139-2    | CAP - BATTERY COVER DSP500   | 1             | 1              | 1                        | 1                         | 1              | 1               |
| 13        | 43-137-2    | PLUG - BUTTON PLUNGER DSP500   | 2             | 2              | 2                        | 2                         | 2              | 2               |
| 14        | 98-395-2    | SPRING - COMPRESSION "C" WEIGHT  | 1             | 1              | 1                        | 1                         | 1              | 1               |
| 15        | 53-142-2    | CAP - BATTERY BUMPER   | 1             | 1              | 1                        | 1                         | 1              | 1               |
| 16        | 51-1979-002 | PLATE - COUNTERWEIGHT  | 1             | 1              | 1                        | 1                         | 1              | 1               |
| 17        | 75-605-2    | SCREW - STAP #8-32 TRILOB TX BZ  |               |                | 2                        | 2                         |                |                 |
| OR        | 75-295-2    | RHMS 8-32 x 1-3/4 (Not Illustrated)                                      | 2             | 2              |                          |                           | 2              | 2               |
| 18        | 76-23-2     | NUT - HEX 8-32 ZP  |               |                | 2                        | 2                         |                |                 |
| OR        | 65-80-2     | WEIGHT BATTERY REPLACEMENT (Not Illustrated)                             | 1             | 1              |                          |                           | 1              | 1               |
| 19        | 11-1056-1   | SUPPORT ASSEMBLY - DSP500XF RIGHT FRONT/LEFT REAR (See Sheet 7)          |               |                | 1                        |                           |                |                 |
| OR        | 11-1055-1   | SUPPORT ASSEMBLY - DSP500XF LEFT FRONT/RIGHT REAR (See Sheet 7)          |               |                |                          | 1                         |                |                 |
| OR        | 11-1080-1   | SUPPORT ASSEMBLY - DSP500 RIGHT FRONT/LEFT REAR (See Sheet 7)            | 1             |                |                          |                           | 1              |                 |
| OR        | 11-1081-1   | SUPPORT ASSEMBLY - DSP500 LEFT FRONT/RIGHT REAR (See Sheet 7)            |               | 1              |                          |                           |                | 1               |
| 20        | 51-1974-1   | PLATE ASSEMBLY - RIGHT FRONT/LEFT REAR                                   | 1             |                | 1                        |                           | 1              |                 |
| OR        | 51-1975-1   | PLATE ASSEMBLY - LEFT FRONT/RIGHT REAR                                   |               | 1              |                          | 1                         |                | 1               |
| 21        | 75-441-2    | SCREW - STAP 8-32 x .50 PH PR BZ   | 3             | 3              | 3                        | 3                         | 3              | 3               |
| 22        | 75-608-2    | PHMS 10 - 32 x .31 PR ZP   | 5             | 5              | 5                        | 5                         | 5              | 5               |
| 23        | 76-382-2    | NUT-T  | 5             | 5              | 5                        | 5                         | 5              | 5               |
| 24        | 109-70-2P   | TRANSDUCER, SMT CAM/CAS  | 1             | 1              | 1                        | 1                         | 1              | 1               |
| 25        | 37-530-1    | WIRE, DSP500 CAM/CAS 10" (Not Illustrated)                               | 1             | 1              | 1                        | 1                         | 1              | 1               |
| 26        | 75-414-2    | PHMS 8-32 x 3/4 PR BZ  | 3             | 3              | 3                        | 3                         | 3              | 3               |
| 27        | 76-71-2     | NUT, KEPS 8-32   | 3             | 3              | 3                        | 3                         | 3              | 3               |
| 28        | 77-309-2    | WASHER, NYLON #8   | 2             | 2              | 2                        | 2                         | 2              | 2               |
| 29        | 109-107-1   | TRANSDUCER ASSEMBLY, DSP500 RIDE HEIGHT (Not Illustrated) (See Sheet 11) |               | REF            |                          | REF                       |                |                 |
| OR        | 109-108-1   | TRANSDUCER ASSEMBLY, DSP500 RIDE HEIGHT (Not Illustrated) (See Sheet 11) | REF           |                | REF                      |                           |                |                 |



**DSP506/506T/508 SENSOR ASSEMBLY**  
 REFER TO NEXT SHEET FOR PARTS DESCRIPTION LISTING

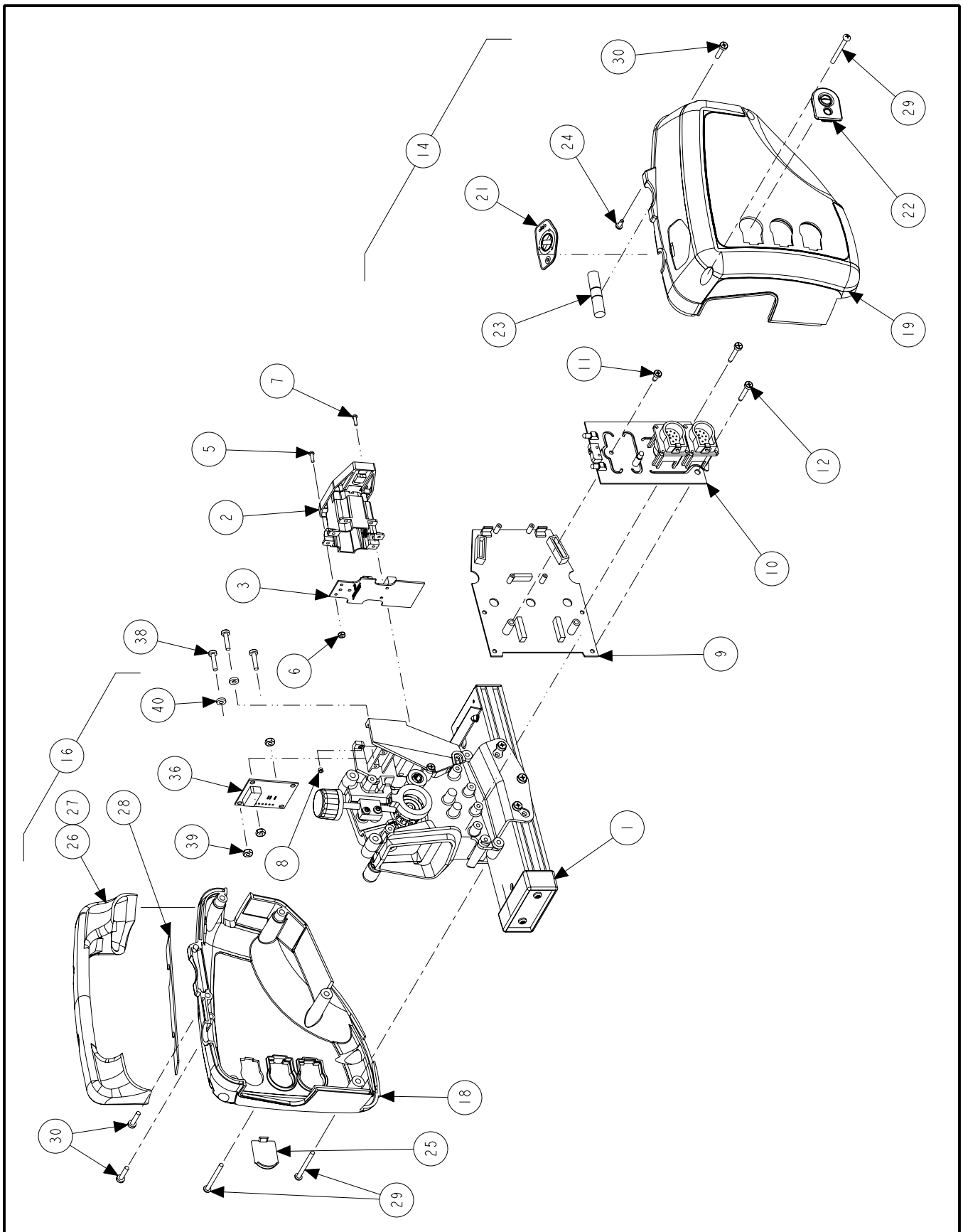


| Index No. | Part Number | Description   | LEFT FRONT 506/508 | RIGHT FRONT 506/508 | LEFT REAR 508 | RIGHT REAR 508 |
|-----------|-------------|---|--------------------|---------------------|---------------|----------------|
| 1         | 117-187-1   | HANGER ASSEMBLY - DSP500 LEFT FRONT/RIGHT REAR (Consisting Of:)                   | REF                |                     |               | REF            |
| OR        | 117-188-1   | HANGER ASSEMBLY - DSP500 RIGHT FRONT/LEFT REAR (Consisting Of:)                   |                    | REF                 | REF           |                |
| 2         | 105-455-1   | HOUSING ASSEMBLY - G2 LENS EMIT LEFT FRONT/RIGHT REAR                             | 1                  |                     |               | 1              |
| OR        | 105-456-1   | HOUSING ASSEMBLY - G2 LENS EMIT RIGHT FRONT/LEFT REAR                             |                    | 1                   | 1             |                |
| 3         | 105-432-1   | HOUSING ASSEMBLY - LENS EMIT TRANSVERSE   | 1                  | 1                   | 1             | 1              |
| 4         | 232-165-1   | ELECT ASSEMBLY - DSP500 TOE (LONG)  | 1                  | 1                   | 1             | 1              |
| OR        | 109-70-2    | REPLACEMENT TRANSDUCER - SMT CAM/CAS (Not Illustrated)                            | 1                  | 1                   | 1             | 1              |
| 5         | 232-186-1   | ELECT ASSEMBLY - DSP500 TOE TRANSDUCER (Fredrick's Cell)                          | 1                  | 1                   | 1             | 1              |
| 6         | 75-31-2     | RHMS 4-40 x .38 PR ZP   | 4                  | 4                   | 4             | 4              |
| 7         | 76-59-2     | NUT - KEPS 4-40   | 8                  | 8                   | 8             | 8              |
| 8         | 38-976-1    | CABLE - LONG TOE, 5.5 (Not Illustrated)   | 1                  | 1                   | 1             | 1              |
| 9         | 75-31-2     | RHMS 4-40 x .38 PR ZP   | 8                  | 8                   | 8             | 8              |
| 10        | 45-961-1    | PCA- DSP 500 TRANSDUCER CONTROL   | 1                  | 1                   | 1             | 1              |
| 11        | 45-1053-1   | PCA- DSP 500 BURNDY   | 1                  | 1                   | 1             | 1              |
| 12        | 75-326-2    | SCREW - STAP 8-32 x 5/16 PH PR BZ   | 5                  | 5                   | 5             | 5              |
| 13        | 75-628-2    | SCREW - STAP 8-32 x 1.12 PH PR BZ   | 2                  | 2                   | 2             | 2              |
| 14        | 69-1054-3   | COVER - TOE BOX, W/ BUMPER  | 1                  | 1                   | 1             | 1              |
| 15        | 69-1047-2   | COVER - TOE BOX UPPER   | 1                  | 1                   | 1             | 1              |
| 16        | 69-1084-1   | COVER ASSEMBLY - RIGHT FRONT/LEFT REAR (Not Illustrated)                          |                    | REF                 | REF           |                |
| 17        | 69-1085-1   | COVER ASSEMBLY - LEFT FRONT/RIGHT REAR  | 1                  |                     |               | 1              |
| 18        | 69-1086-1   | COVER ASSEMBLY - RIGHT FRONT/LEFT REAR (Not Illustrated)                          |                    | REF                 | REF           |                |
| 19        | 69-1087-1   | COVER ASSEMBLY - LEFT FRONT/RIGHT REAR  | 1                  |                     |               | 1              |
| 20        | 69-1045-2   | COVER, DSP500 LEFT FRONT/RIGHT REAR INNER (Consisting Of:)                        | 1                  |                     |               | 1              |
| 21        | 69-1051-3   | COVER, LEFT FRONT/RIGHT REAR OUTER WITH BUMPER (Consisting Of:)                   | 1                  |                     |               | 1              |
| 22        | 18-452-2    | SWITCH, COMP DSP500   | 1                  | REF                 | REF           | 1              |
| 23        | 43-138-2    | PLUG, BURNDY DSP500   | 1                  | REF                 | REF           | 1              |
| 24        | 25-141-2    | GAGE LEVEL VIAL DSP500  | 1                  | REF                 | REF           | 1              |
| 25        | 75-615-2    | SCREW, STAP 4-20 x 3/8  | 2                  | REF                 | REF           | 2              |
| 26        | 142-140-2   | HANDLE, DSP500  | 1                  | REF                 | REF           | 1              |
| 27        | 75-616-2    | SCREW, SELF TAPPING 8-16 x 1/2  | 2                  | REF                 | REF           | 2              |
| 28        | 64-150-2    | PAD, HANDLE   | 1                  | REF                 | REF           | 1              |
| 29        | 75-295-2    | RHMS 8-32 x 1-3/4 PR BZ   | 5                  | 5                   | 5             | 5              |
| 30        | 75-414-2    | PHMS 8-32 x 3/4 PR BZ   | 4                  | 4                   | 4             | 4              |
| 31        | 128-429-2   | DECAL - REAR WHEEL DESIGNATION (Not Illustrated)                                  |                    |                     | 1             | 1              |
| 32        | 128-390-2   | DECAL - SENSOR DISCONNECT POWER (Not Illustrated)                                 | 2                  | 2                   | 2             | 2              |
| 33        | 24-51-2     | NAMEPLATE - HUNTER MODEL & PART (Not Illustrated)                                 | 1                  | 1                   | 1             | 1              |
| 34        | 181-33-2    | ELOP-EN DSP SENSORS (Not Illustrated)   | 2                  | 2                   | 2             | 2              |
| 35        | 53-144-2    | CAP, BURNDY BLANKING  | 1                  | REF                 | REF           | 1              |
| 36        | 128-1003-3  | DECAL, COMPOSITE DSP500 (Not Illustrated)   | 1                  | 1                   | 1             | 1              |
| 37        | 46-520-2    | SPACER, 4-40 x 1.25 HEX SHOULDER (Not Illustrated) (Apply into 11-1069-2 Support) | 4                  | 4                   | 4             | 4              |
| 38        | 109-99-2    | TRANSDUCER, CAM/CAS DUAL AXIS   | 1                  | 1                   | 1             | 1              |
| 39        | 37-531-1    | WIRE, DSP500 DUAL CAM/CAS 10" (Not Illustrated)                                   | 1                  | 1                   | 1             | 1              |
| 40        | 75-414-2    | PHMS 8-32 x 3/4 PR BZ   | 3                  | 3                   | 3             | 3              |
| 41        | 76-71-2     | NUT, KEPS 8-32  | 3                  | 3                   | 3             | 3              |
| 42        | 77-309-2    | WASHER, NYLON #8  | 2                  | 2                   | 2             | 2              |
| 43        | 109-107-1   | TRANSDUCER ASSEMBLY, DSP500 RIDE HEIGHT (See Sheet 11)                            | REF                |                     |               | REF            |
| OR        | 109-108-1   | TRANSDUCER ASSEMBLY, DSP500 RIDE HEIGHT (See Sheet 11)                            |                    | REF                 | REF           |                |



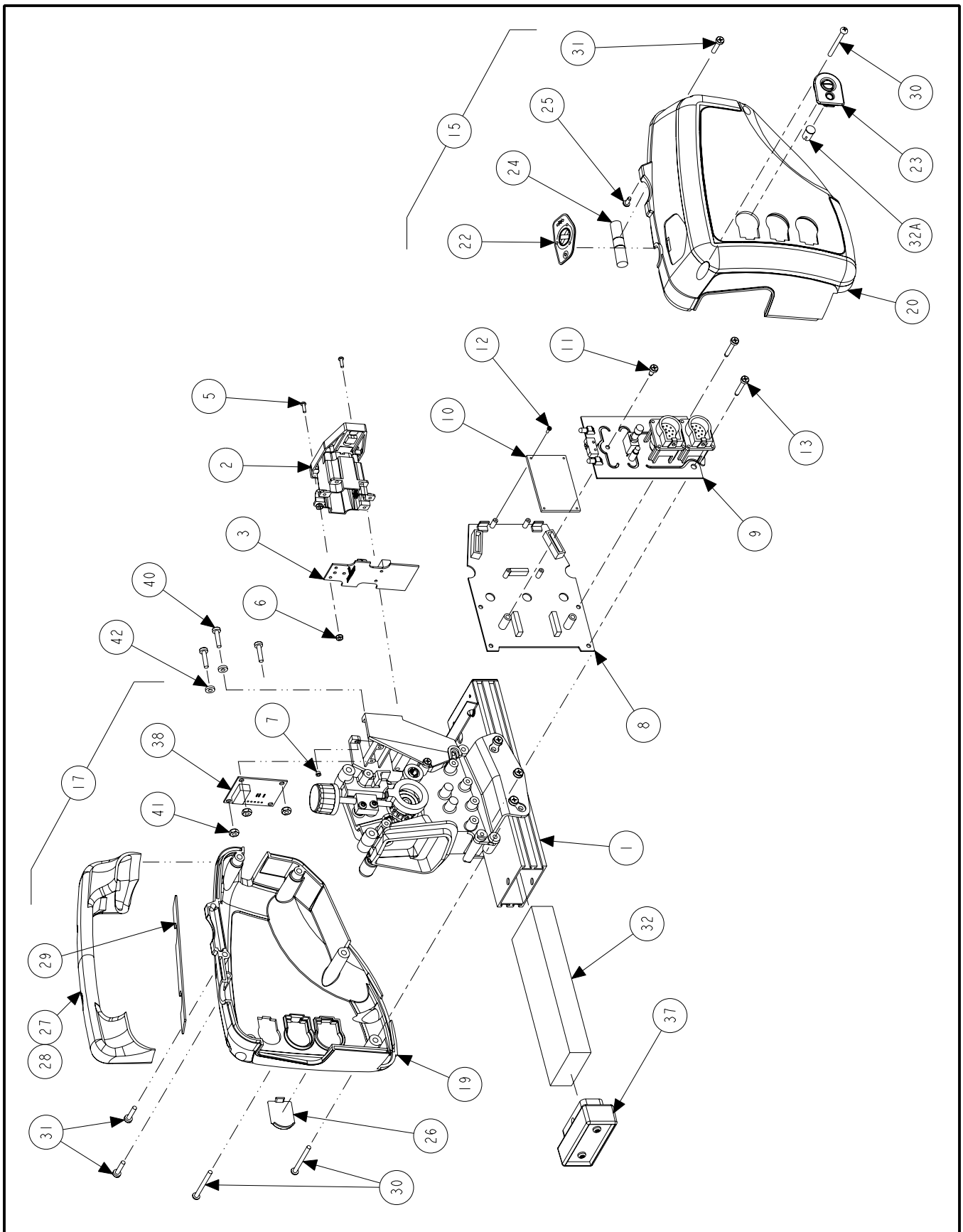
**DSP506T/506T-XF SENSOR ASSEMBLY**  
 REFER TO NEXT SHEET FOR PARTS DESCRIPTION LISTING

| Index No. | Part Number | Description   | LEFT FRONT 506T | RIGHT FRONT 506T | LEFT FRONT 506T-XF | RIGHT FRONT 506T-XF |
|-----------|-------------|---|-----------------|------------------|--------------------|---------------------|
| 1         | 105-425-1   | HOUSING ASSEMBLY - LONG TOE LEFT FRONT/RIGHT REAR (Consisting Of:)                | 1               |                  | 1                  |                     |
| OR        | 105-426-1   | HOUSING ASSEMBLY - LONG TOE RIGHT LEFT FRONT/ LEFT REAR (Consisting Of:)          |                 | 1                |                    | 1                   |
| 2         | 232-165-1   | ELECTRONIC ASSEMBLY, DSP500 TOE LONG  | 1               | 1                | 1                  | 1                   |
| 3         | 75-31-2     | RHMS 4-40 x .38 PR ZP   | 4               | 4                | 4                  | 4                   |
| 4         | 76-59-2     | NUT, KEPS 4-40  | 4               | 4                | 4                  | 4                   |
| 5         | 105-455-1   | HOUSING ASSEMBLY, G2 LENS/EMIT LF/RR  | 1               |                  | 1                  |                     |
| OR        | 105-456-1   | HOUSING ASSEMBLY, G2 LENS/EMIT RF/LR  |                 | 1                |                    | 1                   |
| 6         | 46-520-2    | SPACER, 4-40 x 1.25 HEX SHOULDER (Not Illustrated) (Apply into 11-1069-2 Support) | 4               | 4                | 4                  | 4                   |
| 7         | 109-112-2   | REPLACEMENT TRANSDUCER - 506T LF TRANS TOE (Consisting Of:)                       | 1               |                  | 1                  |                     |
| OR        | 109-113-2   | REPLACEMENT TRANSDUCER - 506T RF TRANS TOE (Not Illustrated) (Consisting Of:)     |                 | 1                |                    | 1                   |
| 8         | 232-186-1   | ELECTRONIC ASSEMBLY - DSP500 TOE TRANSDUCER (Fredricks Cell)                      | 1               | 1                | 1                  | 1                   |
| 9         | 75-31-2     | RHMS 4-40 x .38 PR ZP   | 4               | 4                | 4                  | 4                   |
| 10        | 76-59-2     | NUT, KEPS 4-40  | 4               | 4                | 4                  | 4                   |
| 11        | 105-432-1   | HOUSING ASSEMBLY, LENS/EMIT TRANS   | 1               |                  | 1                  |                     |
| OR        | 105-438-1   | HOUSING ASSEMBLY, 506T TRANS TOE (Not Illustrated)                                |                 | 1                |                    | 1                   |
| 12        | 163-75-2    | LENS LED  |                 |                  | 1                  | 1                   |
| 13        | 75-31-2     | RHMS 4-40 x .38 PR ZP   | 4               | 4                | 4                  | 4                   |
| 14        | 38-976-1    | CABLE - LONG TOE, 5.5 (Not Illustrated)   | 1               | 1                | 1                  | 1                   |
| 15        | 75-31-2     | RHMS 4-40 x .38 PR ZP   | 4               | 4                | 4                  | 4                   |
| 16        | 45-961-1    | PCA- DSP 500 TRANSDUCER CONTROL   | 1               | 1                | 1                  | 1                   |
| OR        | 45-945-1    | PCA, DSP 500 BATTERY CONTROL  |                 |                  | 1                  | 1                   |
| 17        | 45-1053-1   | PCA- DSP 500 BURNDY   | 1               | 1                | 1                  | 1                   |
| 18        | 45-1177-1-1 | PCA, XF RADIO TRANSCEIVER   |                 |                  | 1                  | 1                   |
| 19        | 75-618-2    | PHMS 2-56 X ¼ PR ZP   |                 |                  | 4                  | 4                   |
| 20        | 75-326-2    | SCREW - STAP 8-32 x 5/16 PH PR BZ   | 3               | 3                | 3                  | 3                   |
| 21        | 75-628-2    | SCREW - STAP 8-32 x 1.12 PH PR BZ   | 2               | 2                | 2                  | 2                   |
| 22        | 69-1131-2   | COVER ASSEMBLY - DSP506T TRANS TOE BOTTOM   | 1               | 1                | 1                  | 1                   |
| 23        | 69-1047-2   | COVER ASSEMBLY - TOEBOX UPPER, DSP500   | 1               | 1                | 1                  | 1                   |
| 24        | 69-1084-1   | COVER ASSEMBLY - FRONT, RIGHT FRONT/LEFT REAR                                     |                 | 1                |                    | 1                   |
| OR        | 69-1085-1   | COVER ASSEMBLY - FRONT, LEFT FRONT/RIGHT REAR                                     | 1               |                  | 1                  |                     |
| 25        | 69-1086-1   | COVER ASSEMBLY - REAR, RIGHT FRONT/LEFT REAR (Not Illustrated)                    |                 | 1                |                    | 1                   |
| OR        | 69-1087-1   | COVER ASSEMBLY - REAR, LEFT FRONT/RIGHT REAR (Not Illustrated)                    | 1               |                  | 1                  |                     |
| 26        | 69-1045-2   | COVER, DSP500 LEFT FRONT/RIGHT REAR INNER (Consisting Of:)                        | 1               |                  |                    | 1                   |
| 27        | 69-1051-3   | COVER, LEFT FRONT RIGHT/REAR OUTER WITH BUMPER (Consisting Of:)                   | 1               |                  |                    | 1                   |
| 28        | 18-452-2    | SWITCH, COMP DSP500   | 1               | REF              | REF                | 1                   |
| 29        | 43-138-2    | PLUG, BURNDY DSP500   | 1               | REF              | REF                | 1                   |
| 30        | 25-141-2    | GAGE LEVEL VIAL DSP500  | 1               | REF              | REF                | 1                   |
| 31        | 75-615-2    | SCREW, STAP 4-20 x 3/8  | 2               | REF              | REF                | 2                   |
| 32        | 53-144-2    | CAP, BURNDY BLANKING  | 2               | REF              | REF                | 2                   |
| 33        | 142-140-2   | HANDLE, DSP500  | 1               | REF              | REF                | 1                   |
| 34        | 75-616-2    | SCREW, SELF TAPPING 8-16 x 1/2  | 2               | REF              | REF                | 2                   |
| 35        | 64-150-2    | PAD, HANDLE   | 1               | REF              | REF                | 1                   |
| 36        | 75-295-2    | RHMS 8-32 x 1-3/4 PR BZ   | 5               | 5                | 5                  | 5                   |
| 37        | 75-414-2    | PHMS 8-32 x 3/4 PR BZ   | 4               | 4                | 4                  | 4                   |
| 38        | 194-23-2    | BATTERY, 12V, 2.3 AH LEAD ACID  |                 |                  | 1                  | 1                   |
| 39        | 65-78-1     | WEIGHT ASSEMBLY, COUNTER  |                 |                  | REF                | REF                 |
| OR        | 65-83-1     | WEIGHT ASSEMBLY, COUNTER NON-XF   | REF             | REF              |                    |                     |
| 40        | 128-1160-2  | DECAL-XF2 HIPWR APPROVAL (Not Illustrated)  |                 |                  | 1                  | 1                   |
| 41        | 128-1003-3  | DECAL, COMPOSITE DSP500 (Not Illustrated)   | 1               | 1                | 1                  | 1                   |
| 42        | 24-51-2     | NAMEPLATE - HUNTER MODEL & PART (Not Illustrated)                                 | 1               | 1                | 1                  | 1                   |
| 43        | 181-33-2    | ELOP-EN DSP SENSORS (Not Illustrated)   | 1               | 1                | 1                  | 1                   |
| 44        | 128-390-2   | DECAL - SENSOR DISCONNECT POWER (Not Illustrated)                                 | 2               | 2                | 2                  | 2                   |
| 45        | 65-84       | WEIGHT SHIM (Not Illustrated)   | 1               | 1                | 1                  | 1                   |



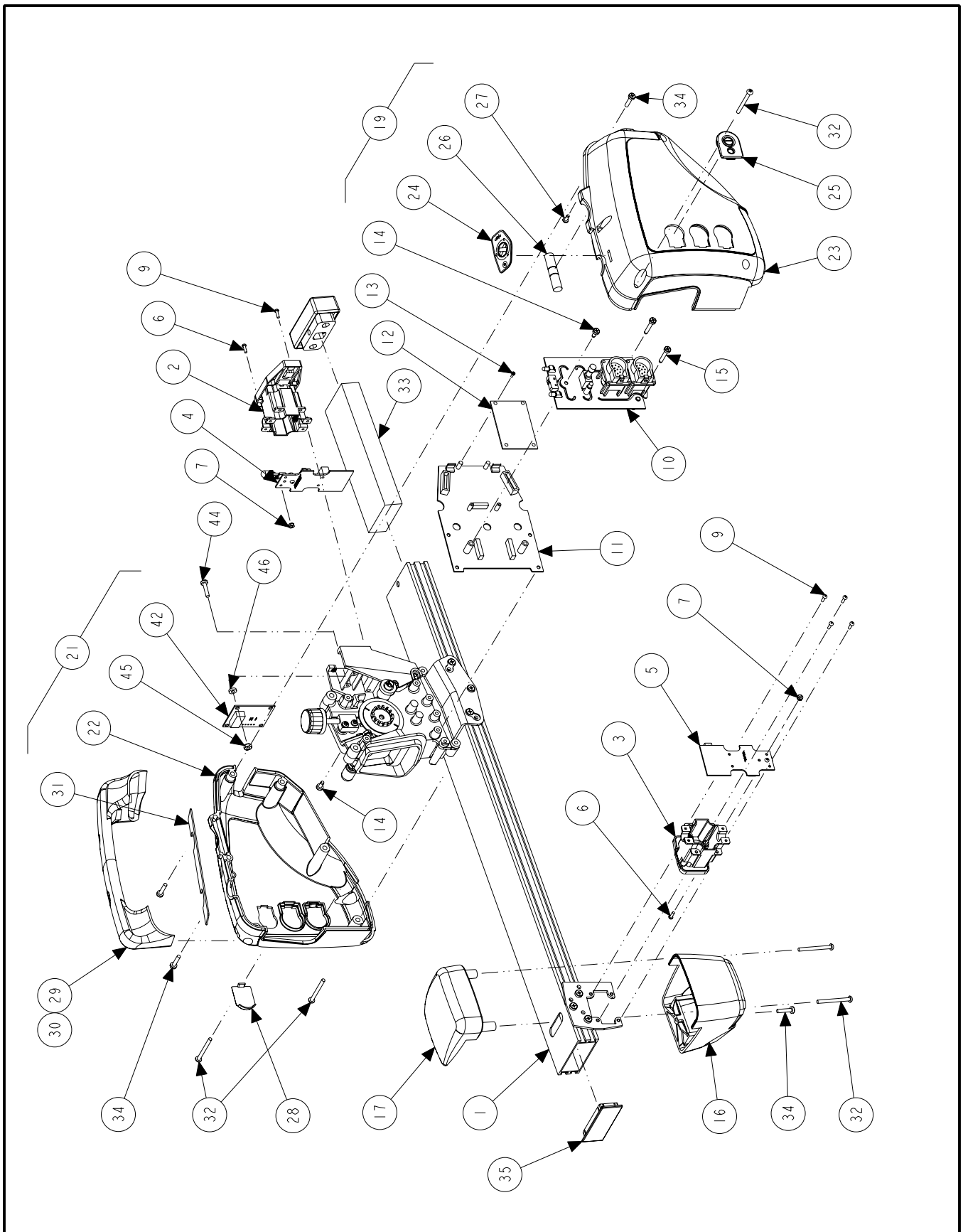
**DSP506/506T SENSOR ASSEMBLY**  
 REFER TO NEXT SHEET FOR PARTS DESCRIPTION LISTING

| Index No. | Part Number | Description  | LEFT REAR 506 | RIGHT REAR 506 | LEFT REAR 506T | RIGHT REAR 506T |
|-----------|-------------|--|---------------|----------------|----------------|-----------------|
| 1         | 117-191-1   | HANGER ASSEMBLY - DSP506 LEFT REAR (Consisting Of:)                | 1             |                | 1              |                 |
| OR        | 117-192-1   | HANGER ASSEMBLY - DSP506 RIGHT REAR (Consisting Of:)               |               | 1              |                | 1               |
| 2         | 105-432-1   | HOUSING ASSEMBLY – LENS EMIT TRANS (Consisting Of:)                | 1             | 1              |                | 1               |
| OR        | 105-438-1   | HOUSING ASSEMBLY – EMIT RIGHT FRONT/LEFT REAR (Consisting Of:)     |               |                | 1              |                 |
| OR        | 105-455-1   | HANGER ASSEMBLY, DSP506T LONG TOE Left Front                       |               | 1              |                |                 |
| OR        | 105-456-1   | HANGER ASSEMBLY, DSP506T LONG TOE Right Front                      | 1             |                |                |                 |
| OR        | 105-442-1   | HOUSING ASSEMBLY – LENS EMIT LR (Stronger Emitters Only for Rear)  |               |                | 1              |                 |
| OR        | 105-441-1   | HOUSING ASSEMBLY – LENS EMIT RR (Stronger Emitters Only for Rear)  |               |                |                | 1               |
| 3         | 232-165-1   | ELECT ASSY - TOE LONG (Note-506T Sensors must be D board or later) | 1             | 1              | 1              | 1               |
| 4         | 109-70-2    | REPLACEMENT TRANSDUCER – SMT CAM/CAS (Not Illustrated)             | 1             | 1              |                |                 |
| 5         | 75-31-2     | RHMS 4- 40 x .38 PR ZP   | 4             | 4              |                |                 |
| 6         | 76-59-2     | NUT, KEPS 4-40   | 8             | 8              |                |                 |
| 7         | 75-31-2     | RHMS 4- 40 x .38 PR ZP   | 4             | 4              | 4              | 4               |
| 8         | 46-520-2    | SPACER - 4-40 x .125 W/HEX SHOULDER                                | 4             | 4              | 4              | 4               |
| 9         | 45-961-1    | PCA- DSP 500 TRANSDUCER CONTROL                                    | 1             | 1              | 1              | 1               |
| 10        | 45-1053-1   | PCA- DSP 500 BURNDY  | 1             | 1              | 1              | 1               |
| 11        | 75-326-2    | SCREW - STAP 8-32 x 5/16" PH PR BZ                                 | 3             | 3              | 3              | 3               |
| 12        | 75-628-2    | SCREW - STAP 8-32 x 1" PH PR BZ                                    | 2             | 2              | 2              | 2               |
| 13        | 69-1084-1   | COVER ASSEMBLY - RIGHT FRONT/LEFT REAR (Not Illustrated)           | REF           |                | REF            |                 |
| 14        | 69-1085-1   | COVER ASSEMBLY - LEFT FRONT/RIGHT REAR (Consisting Of:)            |               | 1              |                | REF             |
| 15        | 69-1086-1   | COVER ASSEMBLY - RIGHT FRONT/LEFT REAR (Not Illustrated)           | REF           |                | REF            |                 |
| 16        | 69-1087-1   | COVER ASSEMBLY - LEFT FRONT/RIGHT REAR (Consisting Of:)            |               | 1              |                | REF             |
| 17        | 69-1044-2   | COVER, DSP500 RIGHT FRONT/LEFT REAR INNER (Not Illustrated)        | REF           |                | REF            |                 |
| 18        | 69-1045-2   | COVER, DSP500 LEFT FRONT/RIGHT REAR INNER (Consisting Of:)         |               | 1              |                | REF             |
| 19        | 69-1051-3   | COVER, LEFT FRONT/RIGHT REAR OUTER WITH BUMPER (Consisting Of:)    |               | 1              |                |                 |
| 20        | 69-1055-3   | COVER, RIGHT FRONT/LEFT REAR OUTER WITH BUMPER (Not Illustrated)   | REF           |                | REF            | REF             |
| 21        | 18-452-2    | SWITCH, COMP DSP500  | REF           | 1              | REF            | REF             |
| 22        | 43-138-2    | PLUG, BURNDY DSP500  | REF           | 1              | REF            | REF             |
| 23        | 25-141-2    | GAGE LEVEL VIAL DSP500   | REF           | 1              | REF            | REF             |
| 24        | 75-615-2    | SCREW, STAP 4-20 x 3/8   | REF           | 2              | REF            | REF             |
| 25        | 53-144-2    | CAP, BURNDY BLANKING   | REF           | 2              | REF            | REF             |
| 26        | 142-140-2   | HANDLE, DSP500   | REF           | 1              | REF            | REF             |
| 27        | 75-616-2    | SCREW, SELF TAPPING 8-16 x 1/2                                     | REF           | 2              | REF            | REF             |
| 28        | 64-150-2    | PAD, HANDLE  | REF           | 1              | REF            | REF             |
| 29        | 75-295-2    | RHMS 8-32 x 1-3/4 PR BZ  | 3             | 3              | 3              | 3               |
| 30        | 75-414-2    | PHMS 8-32 x 3/4 PR BZ  | 3             | 3              | 3              | 3               |
| 31        | 128-1003-3  | DECAL - COMPOSITE DSP500 (Not Illustrated)                         | 1             | 1              | 1              | 1               |
| 32        | 128-390-2   | DECAL - SENSOR DISCONNECT POWER (Not Illustrated)                  | 2             | 2              | 1              | 1               |
| 33        | 24-54-2     | NAMEPLATE - PATENT LABEL (Not Illustrated)                         | 1             | 1              |                |                 |
| 34        | 24-51-2     | NAMEPLATE - HUNTER MODEL & PART (Not Illustrated)                  | 1             | 1              | 1              | 1               |
| 35        | 181-33-2    | ELOP-EN DSP SENSORS (Not Illustrated)                              | 2             | 2              | 1              | 1               |
| 36        | 109-70-2P   | TRANSDUCER, DIGITAL CAM/CAS  | 1             | 1              | 1              | 1               |
| 37        | 37-530-1    | WIRE, DSP500 CAMBER, 10" (Not Illustrated)                         | 1             | 1              | 1              | 1               |
| 38        | 75-414-2    | PHMS 8-32 x 3/4 PR BZ  | 3             | 3              | 3              | 3               |
| 39        | 76-71-2     | NUT, KEPS 8-32   | 3             | 3              | 3              | 3               |
| 40        | 77-309-2    | WASHER, NYLON #8   | 2             | 2              | 2              | 2               |
| 41        | 109-107-1   | TRANSDUCER ASSEMBLY, DSP500 RIDE HEIGHT (See Sheet 11)             |               | 1              |                |                 |
| OR        | 109-108-1   | TRANSDUCER ASSEMBLY, DSP500 RIDE HEIGHT (See Sheet 11)             | 1             |                |                |                 |
| 42        | 65-84       | WEIGHT SHIM (Not Illustrated)                                      |               |                | 1              | 1               |
| 43        | 94-11-2     | TIE, CABLE (Not Illustrated)                                       |               |                | 3              | 3               |



**DSP506-XF/506T-XF SENSOR ASSEMBLY**  
 REFER TO NEXT SHEET FOR PARTS DESCRIPTION LISTING

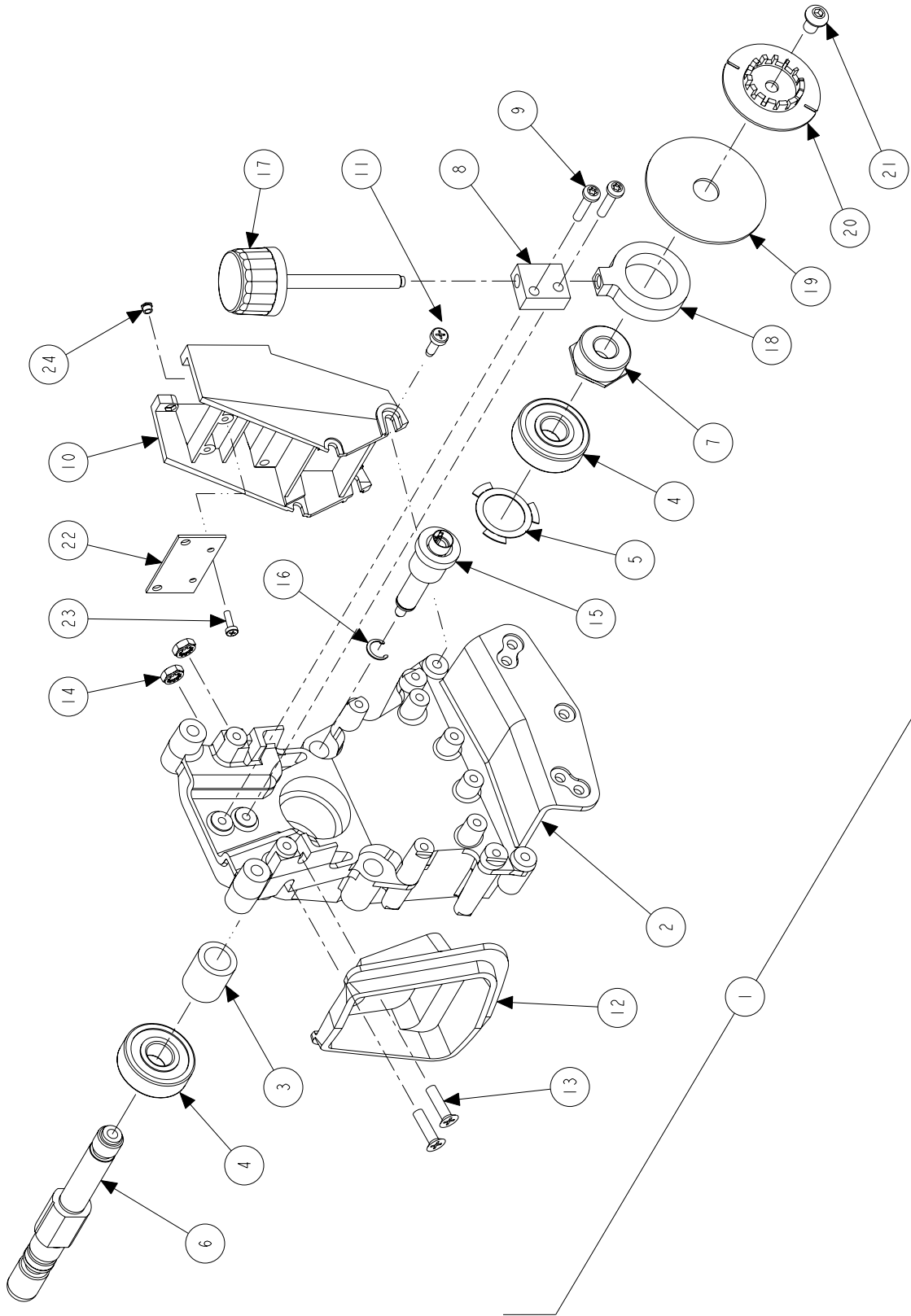
| Index No. | Part Number | Description  | LEFT REAR 506TXF | RIGHT REAR 506TXF | LEFT REAR 506XF | RIGHT REAR 506XF |
|-----------|-------------|--|------------------|-------------------|-----------------|------------------|
| 1         | 117-189-1   | HANGER ASSEMBLY - DSP506 XF LEFT REAR (Consisting Of:)                   | 1                |                   | 1               |                  |
| OR        | 117-190-1   | HANGER ASSEMBLY - DSP506 XF RIGHT REAR (Consisting Of:)                  |                  | 1                 |                 | 1                |
| 2         | 105-432-1   | HOUSING ASSEMBLY - LENS EMIT TRANS (Consisting Of:)                      |                  | 1                 |                 | 1                |
| OR        | 105-438-1   | HOUSING ASSEMBLY - EMIT RIGHT (Consisting Of:)                           | 1                |                   | 1               |                  |
| OR        | 105-455-1   | HOUSING ASSEMBLY, DSP506T LONG TOE Left Front                            |                  |                   |                 | 1                |
| OR        | 105-456-1   | HOUSING ASSEMBLY, DSP506T LONG TOE Right Front                           |                  |                   | 1               |                  |
| OR        | 105-442-1   | HOUSING ASSEMBLY - LENS EMIT LR (Stronger Emitters Only for Rear)        | 1                |                   |                 |                  |
| OR        | 105-441-1   | HOUSING ASSEMBLY - LENS EMIT RR (Stronger Emitters Only for Rear)        |                  | 1                 |                 |                  |
| 3         | 232-165-1   | ELECTRONIC ASSEMBLY - DSP500 TOE (LONG)                                  | 1                | 1                 | 1               | 1                |
| 4         | 109-70-2    | REPLACEMENT TRANSDUCER - SMT CAM/CAS (Not Illustrated)                   | 1                | 1                 | 1               | 1                |
| 5         | 75-31-2     | RHMS 4- 40 x .38 PR ZP   | 4                | 4                 | 4               | 4                |
| 6         | 76-59-2     | NUT, KEPS 4-40   | 8                | 8                 | 8               | 8                |
| 7         | 46-520-2    | SPACER - 4-40 x .125 W/ HEX SHOULDER                                     | 4                | 4                 | 4               | 4                |
| 8         | 45-961-1    | PCA - DSP 500 TRANSDUCER CONTROL   | 1                | 1                 | 1               | 1                |
| 9         | 45-945-1    | PCA - DSP 500 BATTERY CONTROL  | 1                | 1                 | 1               | 1                |
| 10        | 45-1177-1-1 | PCA - XF RADIO TRANSCEIVER   | 1                | 1                 | 1               | 1                |
| 11        | 75-326-2    | SCREW - STAP 8-32 x 5/16 PH PR BZ  | 5                | 5                 | 5               | 5                |
| 12        | 75-618-2    | PHMS 2-56 X ¼ PR ZP  | 4                | 4                 | 4               | 4                |
| 13        | 75-628-2    | SCREW - STAP 8-32 x 1.12" PH PR BZ                                       | 2                | 2                 | 2               | 2                |
| 14        | 69-1084-1   | COVER ASSEMBLY - RIGHT FRONT/LEFT REAR (Not Illustrated)                 | 1                |                   | REF             |                  |
| 15        | 69-1085-1   | COVER ASSEMBLY - LEFT FRONT/RIGHT REAR (Consisting Of:)                  |                  | REF               |                 | 1                |
| 16        | 69-1086-1   | COVER ASSEMBLY - RIGHT FRONT/LEFT REAR (Not Illustrated)                 | 1                |                   | REF             |                  |
| 17        | 69-1087-1   | COVER ASSEMBLY - LEFT FRONT/RIGHT REAR (Consisting Of:)                  |                  | REF               |                 | 1                |
| 18        | 69-1044-2   | COVER, DSP500 RIGHT FRONT/LEFT REAR INNER (Not Illustrated)              | 1                |                   | REF             |                  |
| 19        | 69-1045-2   | COVER, DSP500 LEFT FRONT/RIGHT REAR INNER (Consisting Of:)               |                  | REF               |                 | 1                |
| 20        | 69-1051-3   | COVER, LEFT FRONT/RIGHT REAR OUTER WITH BUMPER (Consisting Of:)          |                  | REF               |                 | 1                |
| 21        | 69-1055-3   | COVER, RIGHT FRONT/LEFT REAR OUTER WITH BUMPER (Not Illustrated)         | 1                |                   | REF             |                  |
| 22        | 18-452-2    | SWITCH, COMP DSP500  | 1                | REF               | REF             | 1                |
| 23        | 43-138-2    | PLUG, BURNDY DSP500  | 1                | REF               | REF             | 1                |
| 24        | 25-141-2    | GAGE LEVEL VIAL DSP500   | 1                | REF               | REF             | 1                |
| 25        | 75-615-2    | SCREW, STAP 4-20 x 3/8   | 2                | REF               | REF             | 2                |
| 26        | 53-144-2    | CAP, BURNDY BLANKING   | 2                | REF               | REF             | 2                |
| 27        | 142-140-2   | HANDLE, DSP500   | 1                | REF               | REF             | 1                |
| 28        | 75-616-2    | SCREW, SELF TAPPING 8-16 x 1/2   | 2                | REF               | REF             | 2                |
| 29        | 64-150-2    | PAD, HANDLE  | 1                | REF               | REF             | 1                |
| 30        | 75-295-2    | RHMS 8-32 x 1-3/4 PR BZ  | 3                | 3                 | 3               | 3                |
| 31        | 75-414-2    | PHMS 8-32 x 3/4 PR BZ  | 3                | 3                 | 3               | 3                |
| 32        | 194-23-2    | BATTERY 12 VOLT 2.3 AH LEAD-ACID   | 1                | 1                 | 1               | 1                |
| 32A       | 163-75-2    | LENS, LED  | 1                | 1                 |                 |                  |
| 33        | 128-1003-3  | DECAL - SENSOR LOCATION WARNING (Not Illustrated)                        | 1                | 1                 | 1               | 1                |
| 34        | 128-390-2   | DECAL - SENSOR DISCONNECT POWER (Not Illustrated)                        | 2                | 2                 | 2               | 2                |
| 35        | 24-51-2     | NAMEPLATE - HUNTER MODEL & PART (Not Illustrated)                        | 1                | 1                 | 1               | 1                |
| 36        | 181-33-2    | ELOP-EN DSP SENSORS (Not Illustrated)                                    | 2                | 2                 | 2               | 2                |
| 36A       | 128-1160-2  | DECAL-XF2 HIPWR APPROVAL (Not Illustrated)                               | 1                | 1                 | 1               | 1                |
| 37        | 65-78-1     | WEIGHT ASSEMBLY COUNTER (See Sheet 4)                                    |                  |                   | REF             | REF              |
| 37A       | 65-84-2     | WEIGHT, SHIM (Not Illustrated)   | 1                | 1                 |                 |                  |
| 37B       | 94-11-2     | TIE, CABLE (Not Illustrated)   | 1                | 1                 |                 |                  |
| 38        | 109-70-2P   | TRANSDUCER, DIGITAL CAM/CAS  |                  |                   | 1               | 1                |
| 39        | 37-530-1    | WIRE, DSP500 CAMBER 10" (Not Illustrated)                                |                  |                   | 1               | 1                |
| 40        | 75-414-2    | PHMS 8-32 x 3/4 PR BZ  |                  |                   | 3               | 3                |
| 41        | 76-71-2     | NUT, KEPS 8-32   |                  |                   | 3               | 3                |
| 42        | 77-309-2    | WASHER, NYLON #8   |                  |                   | 2               | 2                |
| 43        | 109-107-1   | TRANSDUCER ASSEMBLY, DSP500 RIDE HEIGHT (See Sheet 11) (Not Illustrated) |                  |                   |                 | 1                |
| OR        | 109-108-1   | TRANSDUCER ASSEMBLY, DSP500 RIDE HEIGHT (See Sheet 11) (Not Illustrated) |                  |                   | 1               |                  |



**DSP506/508-XF SENSOR ASSEMBLY**  
 REFER TO NEXT SHEET FOR PARTS DESCRIPTION LISTING

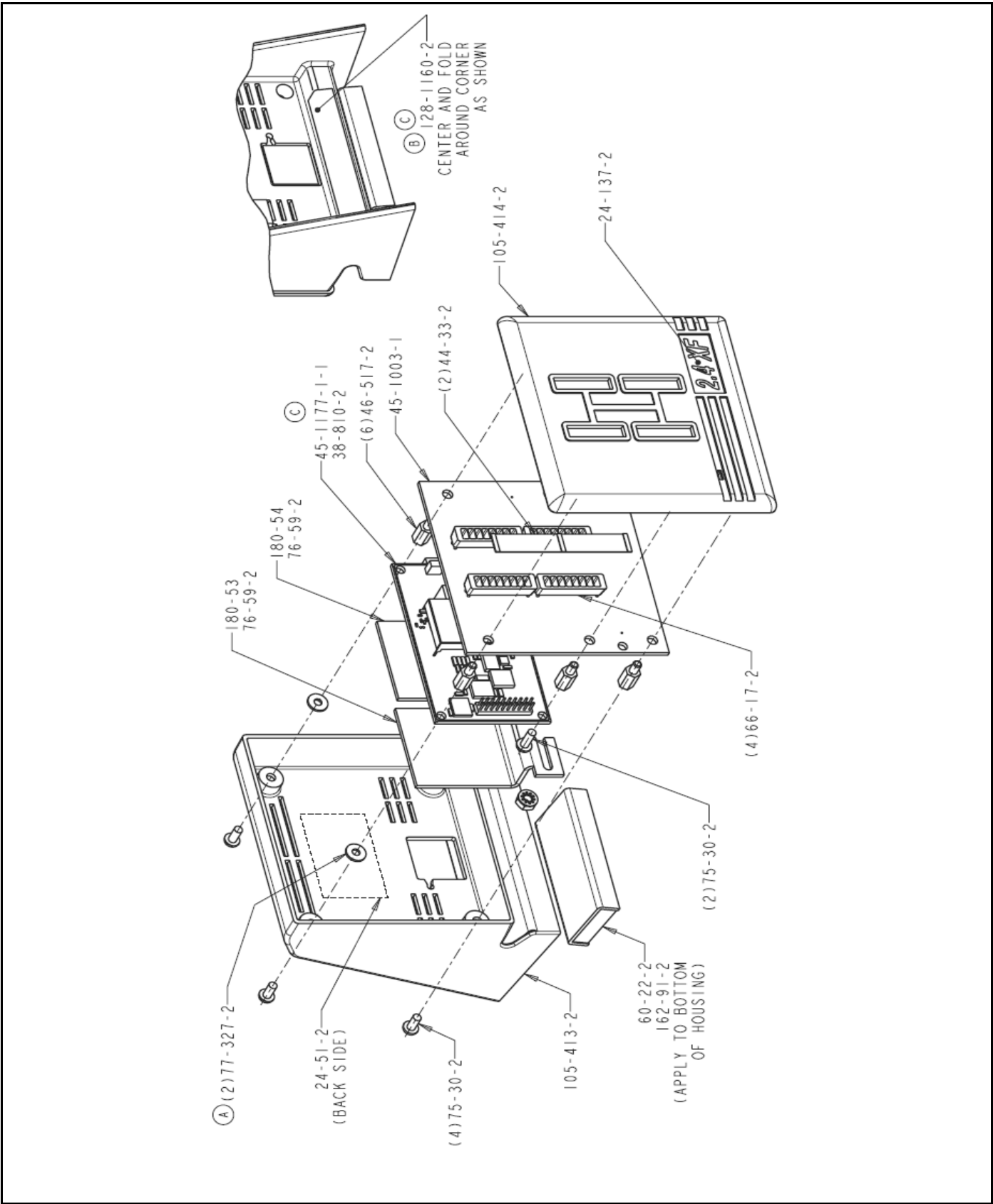


| Index No. | Part Number | Description  | LEFT FRONT<br>506/508XF | RIGHT FRONT<br>506/508XF | LEFT REAR<br>508XF | RIGHT REAR<br>508XF |
|-----------|-------------|--|-------------------------|--------------------------|--------------------|---------------------|
| 1         | 117-183-1   | HANGER ASSEMBLY - DSP500 XF LEFT FRONT/RIGHT REAR (Consisting Of:)       | REF                     |                          |                    | REF                 |
| OR        | 117-184-1   | HANGER ASSEMBLY - DSP500 XF RIGHT FRONT/LEFT REAR (Consisting Of:)       |                         | REF                      | REF                |                     |
| 2         | 105-455-1   | HOUSING ASSEMBLY, G2 LENS EMIT LONG TOE                                  | 1                       |                          |                    | 1                   |
| OR        | 105-456-1   | HOUSING ASSEMBLY, G2 LENS EMIT LONG TOE                                  |                         | 1                        | 1                  |                     |
| 3         | 105-432-1   | HOUSING ASSEMBLY - EMIT TRANSVERSE (Consisting Of:)                      | 1                       | 1                        | 1                  | 1                   |
| 4         | 232-165-1   | ELECT ASSY - DSP500 TOE (LONG)   | 1                       | 1                        | 1                  | 1                   |
| OR        | 109-70-2    | REPLACEMENT TRANSDUCER - SMT CAM/CAS (Not Illustrated)                   | 1                       | 1                        | 1                  | 1                   |
| 5         | 232-166-1   | ELECT ASSY - DSP500 TOE TRANSVERSE                                       | 1                       | 1                        | 1                  | 1                   |
| 6         | 75-31-2     | RHMS 4-40 x .38 PR ZP  | 4                       | 4                        | 4                  | 4                   |
| 7         | 76-59-2     | NUT, KEPS 4-40   | 8                       | 8                        | 8                  | 8                   |
| 8         | 38-976-1    | CABLE - LONG TOE, 10" (Not Illustrated)                                  | 1                       | 1                        | 1                  | 1                   |
| 9         | 75-31-2     | RHMS 4- 40 x .38 PR ZP   | 8                       | 8                        | 8                  | 8                   |
| 10        | 45-945-1    | PCA - DSP500 BATTERY CONTROL   | 1                       | 1                        | 1                  | 1                   |
| 11        | 45-961-1    | PCA - DSP500 TRANSDUCER CONTROL  | 1                       | 1                        | 1                  | 1                   |
| 12        | 45-1177-1-1 | PCA - XF RADIO TRANSCEIVER   | 1                       | 1                        | 1                  | 1                   |
| 13        | 75-618-2    | PHMS 2-56 x 1/4 PR ZP  | 4                       | 4                        | 4                  | 4                   |
| 14        | 75-326-2    | SCREW - STAP 8-32 x 5/16 PH PR BZ  | 5                       | 5                        | 5                  | 5                   |
| 15        | 75-628-2    | SCREW - STAP 8-32 x 1" PH PR BZ  | 2                       | 2                        | 2                  | 2                   |
| 16        | 69-1054-3   | COVER - TOE BOX, WITH BUMPER   | 1                       | 1                        | 1                  | 1                   |
| 17        | 69-1047-2   | COVER - TOE BOX UPPER  | 1                       | 1                        | 1                  | 1                   |
| 18        | 69-1084-1   | COVER ASSEMBLY - RIGHT FRONT/LEFT REAR (Not Illustrated)                 |                         | REF                      | REF                |                     |
| 19        | 69-1085-1   | COVER ASSEMBLY - LEFT FRONT/RIGHT REAR (Consisting Of:)                  | 1                       |                          |                    | 1                   |
| 20        | 69-1086-1   | COVER ASSEMBLY - RIGHT FRONT/LEFT REAR (Not Illustrated)                 |                         | REF                      | REF                |                     |
| 21        | 69-1087-1   | COVER ASSEMBLY - LEFT FRONT/RIGHT REAR (Consisting Of:)                  | 1                       |                          |                    | 1                   |
| 22        | 69-1045-2   | COVER, DSP500 LEFT FRONT/RIGHT REAR INNER (Consisting Of:)               | 1                       |                          |                    | 1                   |
| 23        | 69-1051-3   | COVER, LEFT FRONT RIGHT/REAR OUTER WITH BUMPER (Consisting Of:)          | 1                       |                          |                    | 1                   |
| 24        | 18-452-2    | SWITCH, COMP DSP500  | 1                       | REF                      | REF                | 1                   |
| 25        | 43-138-2    | PLUG, BURNDY DSP500  | 1                       | REF                      | REF                | 1                   |
| 26        | 25-141-2    | GAGE LEVEL VIAL DSP500   | 1                       | REF                      | REF                | 1                   |
| 27        | 75-615-2    | SCREW, STAP 4-20 x 3/8   | 2                       | REF                      | REF                | 2                   |
| 28        | 53-144-2    | CAP, BURNDY BLANKING   | 2                       | REF                      | REF                | 2                   |
| 29        | 142-140-2   | HANDLE, DSP500   | 1                       | REF                      | REF                | 1                   |
| 30        | 75-616-2    | SCREW, SELF TAPPING 8-16 x 1/2   | 2                       | REF                      | REF                | 2                   |
| 31        | 64-150-2    | PAD, HANDLE  | 1                       | REF                      | REF                | 1                   |
| 32        | 75-295-2    | RHMS 8-32 x 1-3/4 PR BZ  | 5                       | 5                        | 5                  | 5                   |
| 33        | 194-23-2    | BATTERY 12 VOLT, 2.3 AH, LEAD ACID                                       | 1                       | 1                        | 1                  | 1                   |
| 34        | 75-414-2    | PHMS 8-32 x 3/4 PR BZ  | 4                       | 4                        | 4                  | 4                   |
| 35        | 53-141-2    | CAP, TOE ARM   | REF                     | REF                      | REF                | REF                 |
| 36        | 128-429-2   | DECAL - REAR WHEEL DESIGNATION (Not Illustrated)                         | 1                       | 1                        | 1                  | 1                   |
| 36A       | 128-1160-2  | DECAL-XF2 HIPWR APPROVAL (Not Illustrated)                               | 1                       | 1                        | 1                  | 1                   |
| 37        | 128-1003-3  | DECAL - COMPOSITE (Not Illustrated)                                      | 1                       | 1                        | 1                  | 1                   |
| 38        | 128-390-2   | DECAL - SENSOR DISCONNECT POWER (Not Illustrated)                        | 2                       | 2                        | 2                  | 2                   |
| 39        | 46-520-2    | SPACER, 4-40 x .125 HEX (Not Illustrated) (Apply into 11-1069-2 Support) | 1                       | 1                        | 1                  | 1                   |
| 40        | 24-51-2     | NAMEPLATE - HUNTER MODEL & PART (Not Illustrated)                        | 1                       | 1                        | 1                  | 1                   |
| 41        | 181-33-2    | ELOP-EN DSP SENSORS (Not Illustrated)                                    | 2                       | 2                        | 2                  | 2                   |
| 42        | 109-99-2    | TRANSDUCER, CAM/CAS DUAL AXIS  | 1                       | 1                        | 1                  | 1                   |
| 43        | 37-531-1    | WIRE, DSP500 DUAL CAM/CAS 10" (Not Illustrated)                          | 1                       | 1                        | 1                  | 1                   |
| 44        | 75-414-2    | PHMS 8-32 x 3/4 PR BZ  | 3                       | 3                        | 3                  | 3                   |
| 45        | 76-71-2     | NUT, KEPS 8-32   | 3                       | 3                        | 3                  | 3                   |
| 46        | 77-309-2    | WASHER, NYLON #8   | 2                       | 2                        | 2                  | 2                   |
| 47        | 109-107-1   | TRANSDUCER ASSEMBLY, DSP500 RIDE HEIGHT (See Sheet 11)                   | REF                     |                          |                    | REF                 |
| OR        | 109-108-1   | TRANSDUCER ASSEMBLY, DSP500 RIDE HEIGHT (See Sheet 11)                   |                         | REF                      | REF                |                     |



**DSP506/508 SENSOR ASSEMBLY**  
 REFER TO NEXT SHEET FOR PARTS DESCRIPTION LISTING

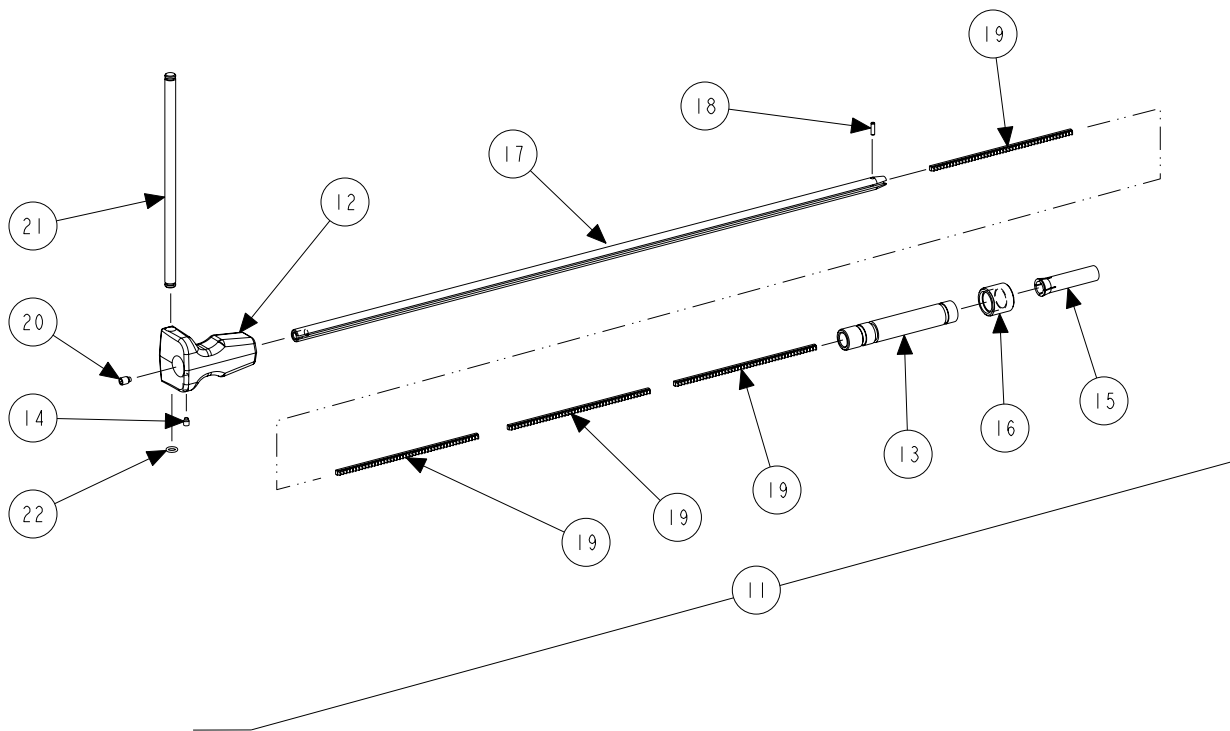
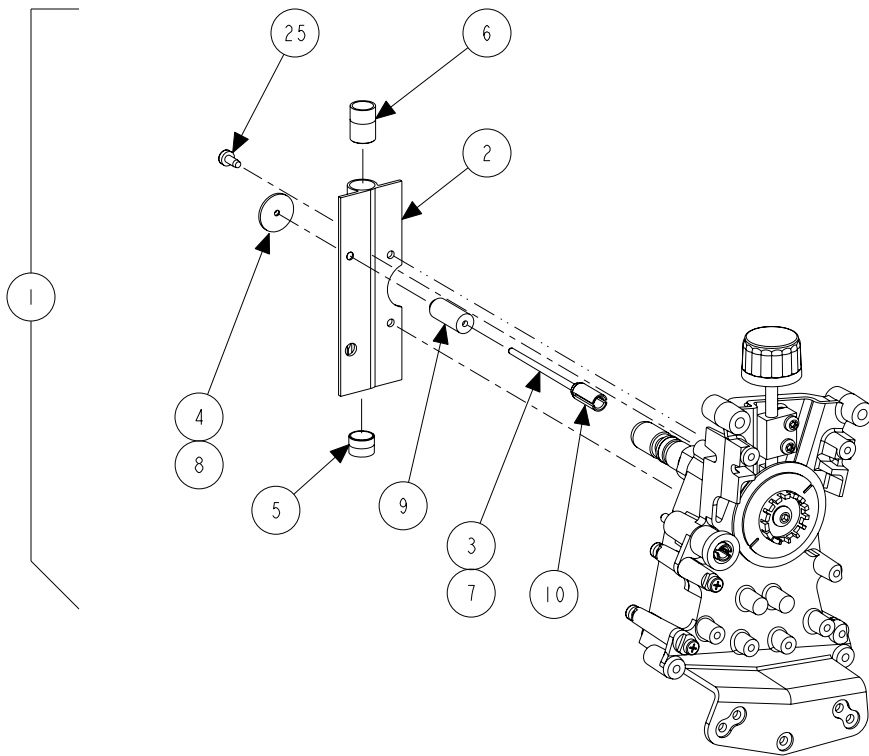
| Index No. | Part Number | Description                                 | 506 XF<br>508 XF | 506<br>508 |
|-----------|-------------|---|------------------|------------|
| 1         | 11-1055-1   | SUPPORT ASSEMBLY - XF LEFT FRONT/RIGHT REAR | 1                |            |
| OR        | 11-1056-1   | SUPPORT ASSEMBLY - XF RIGHT FRONT/LEFT REAR | 1                |            |
| OR        | 11-1080-1   | SUPPORT ASSEMBLY - RIGHT FRONT/LEFT REAR    |                  | 1          |
| OR        | 11-1081-1   | SUPPORT ASSEMBLY - LEFT FRONT/RIGHT REAR    |                  | 1          |
| 2         | 11-1082-2   | SUPPORT- SENSOR DIECAST                     | 1                | 1          |
| 3         | 46-414-2    | SPACER - BEARING                            | 1                | 1          |
| 4         | 130-116-2   | BEARING - SENSOR                            | 2                | 2          |
| 5         | 98-323-2    | SPRING - WASHER                             | 1                | 1          |
| 6         | 97-471-2    | SHAFT                                       | 1                | 1          |
| 7         | 76-313-2    | NUT - HUB                                   | 1                | 1          |
| 8         | 121-213-2   | BLOCK - LOCK                                | 1                | 1          |
| 9         | 75-472-2    | SCREW - STAP 8-32 x .75 PH TX BZ            | 2                | 2          |
| 10        | 11-1069-2   | SUPPORT - LONG TOE                          | 1                | 1          |
| 11        | 75-446-2    | SCREW - STAP 8-32 x 3/8 PH PR BZ            | 4                | 4          |
| 12        | 117-185-1   | HANGER ASSEMBLY - RECHARGE                  | 1                |            |
| OR        | 101-177-2   | CASTING - SENSOR HANGER                     |                  | 1          |
| 13        | 75-609-2    | FHMS 10 - 32 x .87 PR FT HD ZP              | 2                | 2          |
| 14        | 76-61-2     | NUT - KEPS 10-32 ZP                         | 2                | 2          |
| 15        | 178-27-1    | COUPLING ASSEMBLY - ENCODER                 | 1                | 1          |
| 16        | 112-75-2    | SNAP RING - 5103-37                         | 1                | 1          |
| 17        | 34-127-3    | KNOB - LOCK                                 | 1                | 1          |
| 18        | 223-56-2    | RING - BRAKE                                | 1                | 1          |
| 19        | 99-72-2     | GEAR - SPUR 2.25                            | 1                | 1          |
| 20        | 158-83-2    | WHEEL - ENCODER                             | 1                | 1          |
| 21        | 75-614-2    | SBHCS 1/4 - 28 - 3/8 FT HD BO               | 1                | 1          |
| 22        | 51-1994     | PLATE, CAMBER                               | 1                | 1          |
| 23        | 75-639-2    | PHMS 4-40 x 3/8 PR ZP                       | 2                | 2          |
| 24        | 46-520-2    | SPACER 4-40 x 1.25 W/ HEX SHOULDER          | 2                | 2          |



**DSP506/508 SENSOR ASSEMBLY**

REFER TO NEXT SHEET FOR PARTS DESCRIPTION LISTING

| Part Number        | Description   | Qty. |
|--------------------|---|------|
| <b>232-201-1</b>   | <b>ELECTRONIC ASSEMBLY, 2.4 XF POD (Consisting Of:)</b> | 1    |
| 105-414-2          | HOUSING-FRONT 2.4 XF POD                                | 1    |
| 105-413-2          | HOUSING-REAR 2.4 XF POD                                 | 1    |
| 46-517-2           | STANDOFF-3/16 HEX 5/16LG 4-40                           | 6    |
| 75-30-2            | RHMS 4-40X1/4 PR ZP                                     | 6    |
| 77-327-2           | WASHER, NYLON .277 OD X .108 ID                         | 2    |
| 45-1003-1          | PCA-XF POD  | 1    |
| <b>45-1177-1-1</b> | <b>ZIGBEE RADIO G2</b>                                  | 1    |
| 38-810-2           | CABLE-8COND PHONE W/CONN'S 6' (Not Illustrated)         | 1    |
| 66-17-2            | SEPARATOR LED 2.4 XF POD                                | 4    |
| 180-53             | HEATSINK LH-MINIPOD                                     | 1    |
| 180-54             | HEATSINK RH-MINIPOD                                     | 1    |
| 76-59-2            | NUT-KEPS 4-40   | 2    |
| 60-22-2            | MAGNET-CHANNEL  | 1    |
| 44-33-2            | WINDOW-RED FILTER 2.4 XF POD                            | 2    |
| 162-91-2           | TAPE-FOAM .03 THICK                                     | 2    |
| 24-137-2           | NAMEPLATE-2.4 XF  | 1    |
| <b>24-51-2</b>     | <b>NAMEPLATE, HUNTER MODEL &amp; PART</b>               | 1    |
| <b>128-1160-2</b>  | <b>DECAL, XF2 HIPWR APPROVAL</b>                        | 1    |



**DSP506/508 SENSOR ASSEMBLY**  
 REFER TO NEXT SHEET FOR PARTS DESCRIPTION LISTING

**PARTS DESCRIPTION LISTING**

| Index No. | Part Number | Description   | Qty. |
|-----------|-------------|---|------|
| 1         | 109-107-1   | TRANSDUCER ASSEMBLY-DSP500 RIDE HEIGHT-LF/RR (Consisting Of:) | 2    |
| OR        | 109-108-1   | TRANSDUCER ASSEMBLY-DSP500 RIDE HEIGHT-RF/LR (Consisting Of:) | 2    |
| 2         | 11-1084-2   | SUPPORT-RIDE HEIGHT DSP500 LF/RR                              | 1    |
| OR        | 11-1100-2   | SUPPORT-RIDE HEIGHT DSP500 RF/LR                              | 1    |
| 3         | 97-476-2    | SHAFT-RIDE HEIGHT, DSP500                                     | 1    |
| 4         | 99-130-2    | GEAR-RIDE HEIGHT DSP500                                       | 1    |
| 5         | 113-203-2   | BUSHING-RIDE HEIGHT, SHORT                                    | 1    |
| 6         | 113-204-2   | BUSHING-RIDE HEIGHT, LONG                                     | 1    |
| 7         | 124-147-2   | SEAL-O RING, 1/8 ID X 5/16 OD                                 | 2    |
| 8         | 75-190-2    | SSS 4-40X.13 CUP PT BO  | 2    |
| 9         | 130-176-2   | BEARING-RIDE HEIGHT   | 1    |
| 10        | 223-48-2    | RING-COMPRESSION  | 1    |
| 11        | 221-669-1   | KIT, TOOL RIDE HEIGHT, DSP500 (Consisting Of:)                | 1    |
| 12        | 34-175      | KNOB-RIDE HEIGHT PAINTED                                      | 1    |
| 13        | 106-137-2   | SLEEVE-RIDE HEIGHT  | 1    |
| 14        | 75-182-2    | SSS 10-32X1/4 HALF DOG PT                                     | 1    |
| 15        | 113-240-2   | BUSHING-RH TOOL   | 1    |
| 16        | 34-174-2    | KNOB-RH TOOL  | 1    |
| 17        | 63-231-2    | ROD-RACK GUIDE, RIDE HEIGHT                                   | 1    |
| 18        | 135-173-2   | PIN-SPLITROLL 1/8 X 7/16                                      | 1    |
| 19        | 99-102-2    | GEAR-RACK, RIDE HEIGHT  | 4    |
| 20        | 75-320-2    | SSS 1/4-20X3/8 HALF DOG PT                                    | 1    |
| 21        | 63-232-2    | ROD-TOOL RIDE HEIGHT (10")                                    | 1    |
| 22        | 124-109-2   | SEAL-O RING .25 ID X .38 OD                                   | 2    |
| 23        | 162-47-2    | ADHESIVE-THREAD LOCKING (Not Illustrated)                     | A/R  |
| 24        | 181-33-2    | ELOP-EN DSP100 SENSORS (Not Illustrated)                      | 4    |
| 25        | 75-326-2    | SCREW-STAP 8-32X5/16 PH PR BZ                                 | 8    |